



## Weekly update on North Island weather event (incl Cyclone Gabrielle) recovery activity

### Trends in recovery planning

- MPI continues to work with Auckland Council to advocate for primary industries. Auckland rural communities are signalling that they feel over looked by Auckland Council given their focus on urban land classification.
- Coromandel drainage infrastructure rebuilding is underway on SH25, improved access predicted in the near future.
- Tararua District Council has completed analysis of Impact Assessment Surveys, with a final report due to be released in the coming week. The draft recovery plan is expected at the end of June.
- Wairarapa District Council aims to have a draft recovery plan completed by 30 June 2023. The Recovery Office priorities are: land classification framework, funding, and the recovery action plan.

### Key Updates

- All kumara have been harvested. The Kumara Seed Contingency Plan will ensure that growers have at least 77% of the seed required for next season's planting. The funding, supported by MPI, provides \$2000/bin of seed with the balance to be settled by growers.
- Improvement in the log export market is not expected until at least September which may have an ongoing effect on companies already struggling in the current climate.
- As at 21 June 2023, the Sediment and Silt Recovery Fund in Hawke's Bay has received a total of 65 completed applications (with total requests of \$6.2 million) with a further 119 started. Of the completed applications, nine are to be considered for funding at the Assessment Panel meeting on 22 June for funding decisions, with assessment of a further 46 applications underway. It has been noted that it is taking longer than expected to receive all the information necessary from applicants and for all matters arising from assessment to be addressed.



### Farmer & Grower Grants

\$63.9 million paid in grant applications

As at 22 June, 5,484 applications for farmer and grower recovery grants have been approved and paid, totalling \$63.9 million in value.

### North Island Weather Event (NIWE) Fund

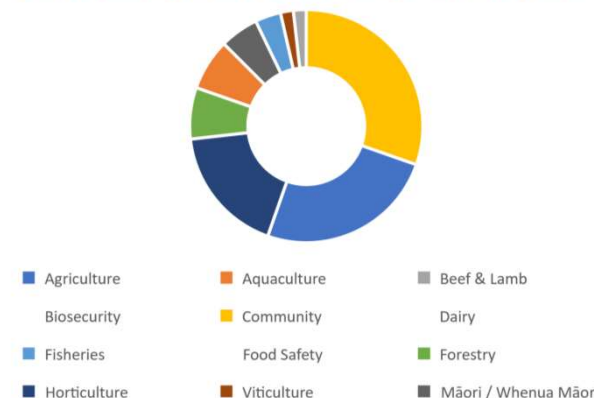
MPI has received 70 Expressions of Interest (EOIs) to the NIWE Time-critical (TCN) and NIWE Isolated Rural Communities (IRC) funds from the primary industries and rural communities, with more expected in the coming weeks.

Announcements are anticipated on the first tranche of successful initiatives shortly. Details will be available on the [Cyclone Gabrielle recovery: advice, support, and funding | NZ Government \(mpi.govt.nz\)](#) information page.

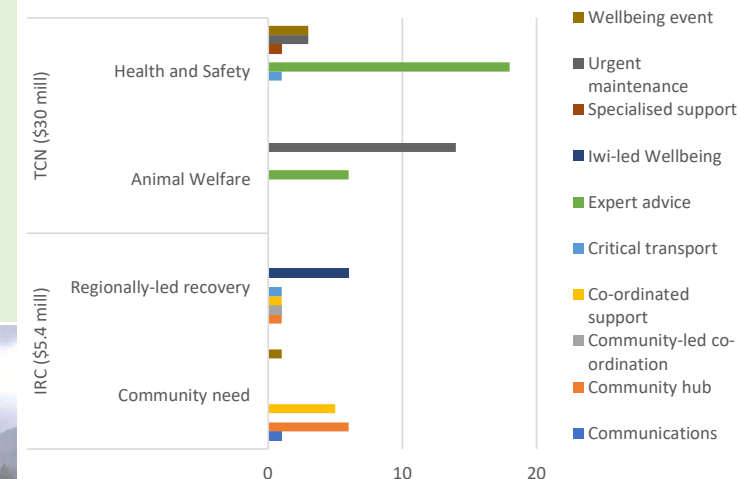
The first of the forestry EOI applications for the fund have been received and are ready for assessment.

MPI are also considering initiatives for iwi-led recovery and community hubs.

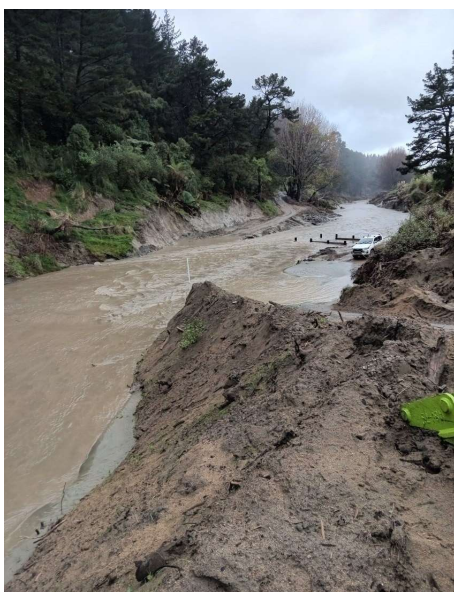
### NIWE EXPRESSIONS OF INTEREST BY INDUSTRY



### NUMBER OF NIWE EXPRESSIONS OF INTEREST BY CATEGORY



### NIWE EXPRESSIONS OF INTEREST BY REGION



Left: The Waikare River, Hawke's Bay mid June 2023.



Right: The extent of damage to rural roads and the access issues for the forestry industry, farmers and our rural communities is clear in this image of Tauwharepare Road, Tairāwhiti.