



Marlborough
Emergency Management

GROUP

Marlborough Emergency Operations Centre
Wither Road West
PO Box 443
Blenheim 7240

Phone (03) 520 7490
Fax (03) 5784954

17 April 2012

Nelson / Tasman Emergency Management Office
Trafalgar Square
Nelson

Dear Joe

Re: Marlborough CDEM Group Earthquake Simulator

This project is nearing completion with the engineers finalising the mechanical section of the simulator.

As you can see by the attached photos, one side opens completely allowing spectators to watch participants go through the drop cover hold process.

It is planned to have audio of an earthquake with crockery or other items falling to increase the realism of the simulator as the machine rocks.

The simulator has been wired to run on mains power of generator.

Interior and exterior signage is currently being quoted.

Thoughts are the exterior may have a seismic line right around the outside with our group logo and Earthquake simulator written on it.

The interior may have a map of Marlborough showing the fault lines, the doors will have the drop cover hold message and photos of items you require in a survival kit.

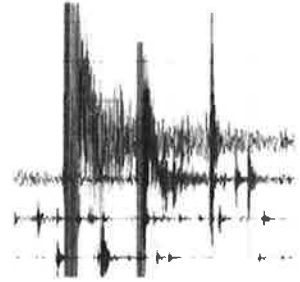
Other signage information may be added, remembering we still have to install a table and chairs.

If you require more information please don't hesitate to contact me.

Regards

A handwritten signature in cursive script that reads "John Foley".

John Foley
Emergency Services Officer



Options being looked at are to cover one interior wall with a map showing local fault lines. The other walls may have key messages remembering furniture is yet to be added.

Nelson Tasman Emergency Management Trailer

The Nelson Tasman Emergency Management Office was approved funding in August 2011 through the Resilience Fund. The purchase, branding, stocking and housing of a Civil Defence Emergency Management Public Education Public Information display trailer was requested at a cost of \$21,780.

Included in the resilience fund is:

- Trailer, with additional doors, spare wheel, wiring and sign written
- Display unit for emergency kit
- Gazebo for events with logo and walls
- 2 laptops with 1 printer and kiosk
- TV and wiring
- 3 banners

Please find costings, associated invoices and photographs for your perusal detailed below.

Invoices:

| | | |
|---------------------------------------|---|---------------------|
| Kea Trailers, Christchurch | Trailer with side door, shelving, spare wheel | \$8,425.00 incl GST |
| Powersigns | Signwriting of trailer | \$1,024.54 incl GST |
| Brandstand | Stand for emergency kit | \$607.32 incl GST |
| Rollo's Outdoor Centre | Gazebo, walls | \$625.20 incl GST |
| Gen-I | 2 laptops with docking stations and software | 5,469.40 incl GST |
| Harvey Norman | Samsung LED TV | \$1,059.00 incl GST |
| Harvey Norman | Video Cables tv – laptops | \$55.99 incl GST |
| Harvey Norman | TV Mount | \$147.00 incl GST |
| Harvey Norman | Printer with ink | \$236.90 incl GST |
| Para Rubber | Safety pads for trailer door corners | \$45.04 incl GST |
| Heslops Engineering | Welding of mounts and attachment of trailer. Initial Warrant of Fitness | \$689.57 incl GST |
| Andrew Healey Signs | Banners x 3, Stand banner x1, Signs for side of gazebo | 2,984.25 incl GST |
| Mike Barrett – Building Contractor | Kiosk for laptops | 1,349.25 incl GST |
| Total: | | \$22,718.46 |





