



Te Rākau  
Whakamarumarū

Ministry of Civil Defence  
& Emergency Management

# National Lifeline Workbriefs 2009-2010

Mark Constable  
Emergency Management Advisor,  
Sector Development



# MCDEM Lifelines Work

- Operational Lifeline Utility Coordination
  - Sector Coordinating Entities
  - Competency Framework (LUC role)
- National Fuel Contingency Planning
- National Exercise Programme
- Related activities



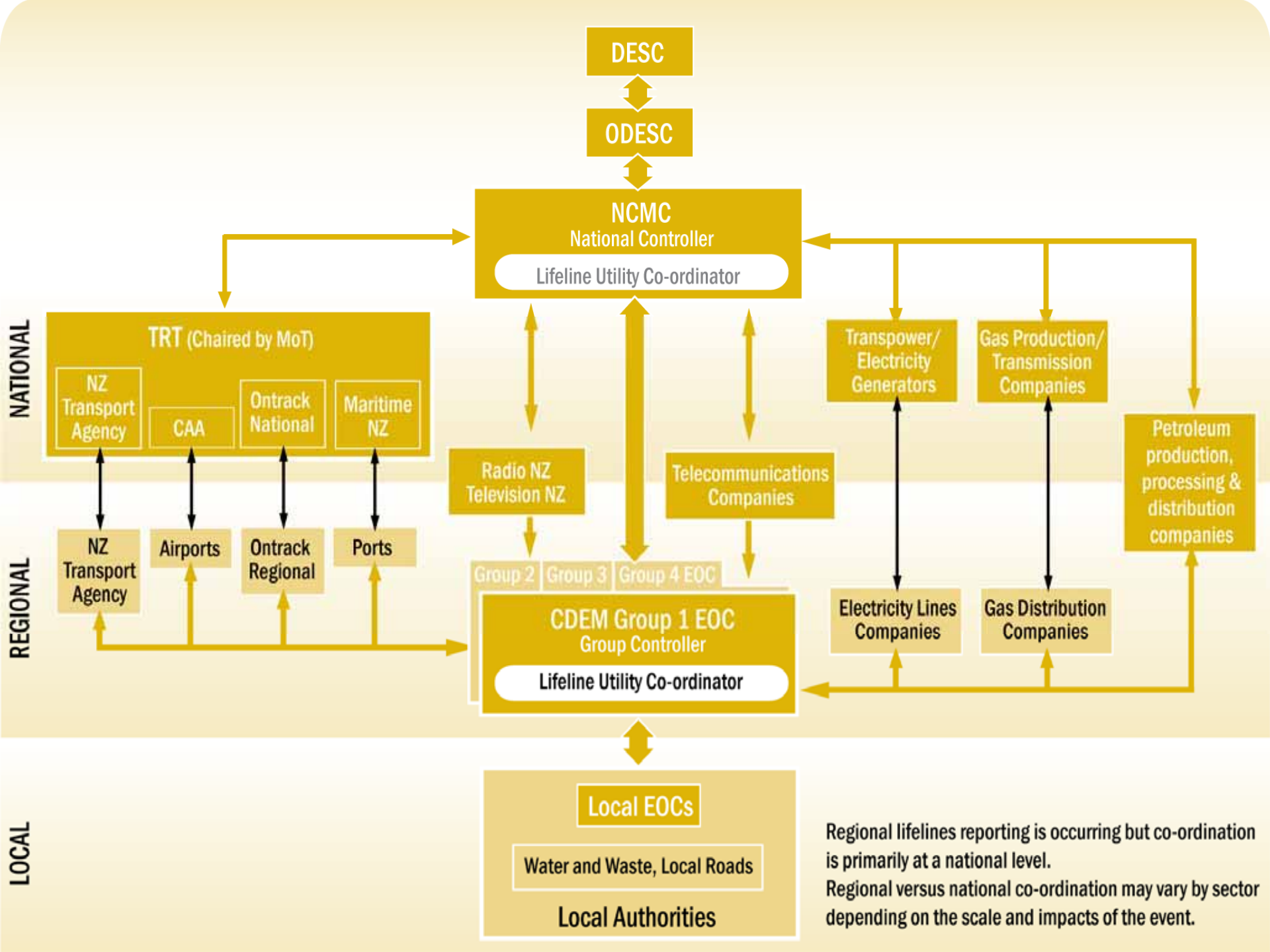
# Lifelines Coordination

- The Guide, s10 – Lifeline Utilities
- Parallel lifeline group “Protocols”
- NCMC LUC SOPs
- LUC Status Boards



# Sector Coordinating Entities

- Development of 'Sector Coordinating Entities' (SCE)
- National single "point of contact" per sector:
  - Electricity: Transpower
  - Gas: GANZ + Vector (CCO)
  - Telecommunication: TEPF (NEAT)
  - Transport: TRT
  - Fuel: Fuel SCE





# Lifeline Utility Coordinator

- 
- EOC / ECC Lifeline Utility Coordinator
  - MCDEM "Competency Framework" project
    - Phase 1- LUC Workshop
    - Phase 2- Role Mapping & "gap analysis"
  - Development of Competency Standards & training materials


The background of the slide is a photograph of a wide, shallow river with a rocky bed. The water is a milky, light brown color, suggesting sediment. The river flows from the background towards the right. On the left bank, there is a steep, rocky embankment covered with dense green vegetation, including trees and ferns. In the distance, a metal truss bridge spans across the river. The sky is overcast with grey clouds. Overlaid on the left side of the image is a list of four exercise tiers in yellow text with orange outlines.

# National Exercise Programme

- Tier 1: Local exercise
- Tier 2: Group exercise
- Tier 3: Inter-Group exercise
- Tier 4: National exercise



# Tiers 3 and 4

- Improve the response capability at national and CDEM Group levels;
  - Improve the response capability at central government level; and
  - Assess the readiness of participants.
- 
- The background of the slide features a scenic view of a dam with multiple spillways, set against a backdrop of lush green hills. In the foreground, a large, modern building with a grid-like facade is visible, situated near a body of water. The overall atmosphere is serene and natural.



# Exercises Schedule

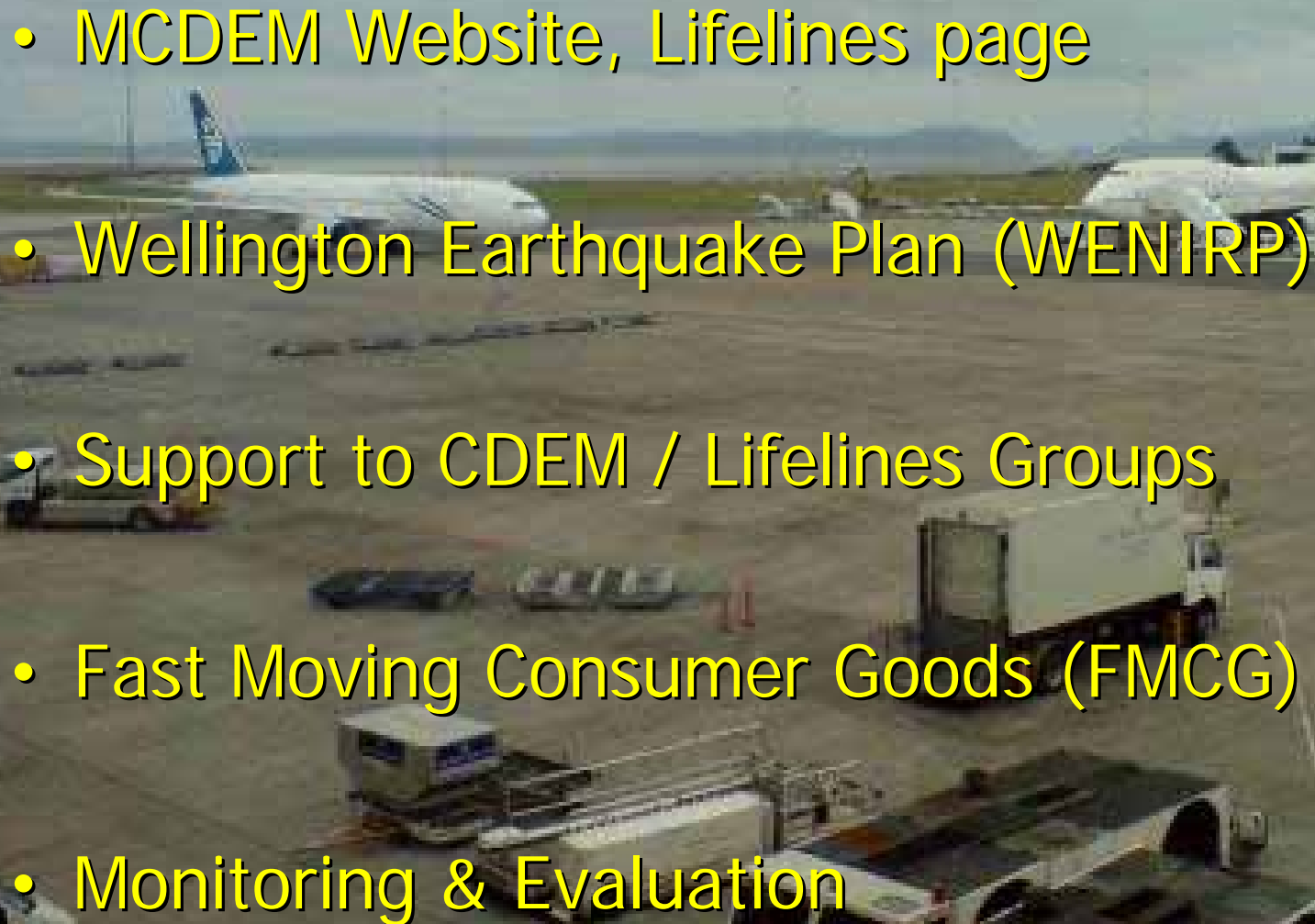
Tier	Lead	Exercise Name	Date
2	Wellington CDEM Group	Exercise Phoenix VI (Earthquake)	6,12 and 13 November 2009
2	Hawkes Bay CDEM Group	Exercise Bay Vac (Flooding)	13 November 2009
Other	NZ Police	Exercise Guardian 3 (Counter Terrorism)	March 2010 (Date TBC)
Other	NZ Police	Exercise Guardian 4 (Counter Terrorism)	August 2010 (Date TBC)
4	MCDEM	TBC (Tsunami)	20 October 2010

- **Home > For the CDEM Sector > CDEM Exercises**

- [http://www.civildefence.govt.nz/memwebsite.nsf/wpg\\_URL/For-the-CDEM-Sector-CDEM-Exercises-Index?OpenDocument](http://www.civildefence.govt.nz/memwebsite.nsf/wpg_URL/For-the-CDEM-Sector-CDEM-Exercises-Index?OpenDocument)



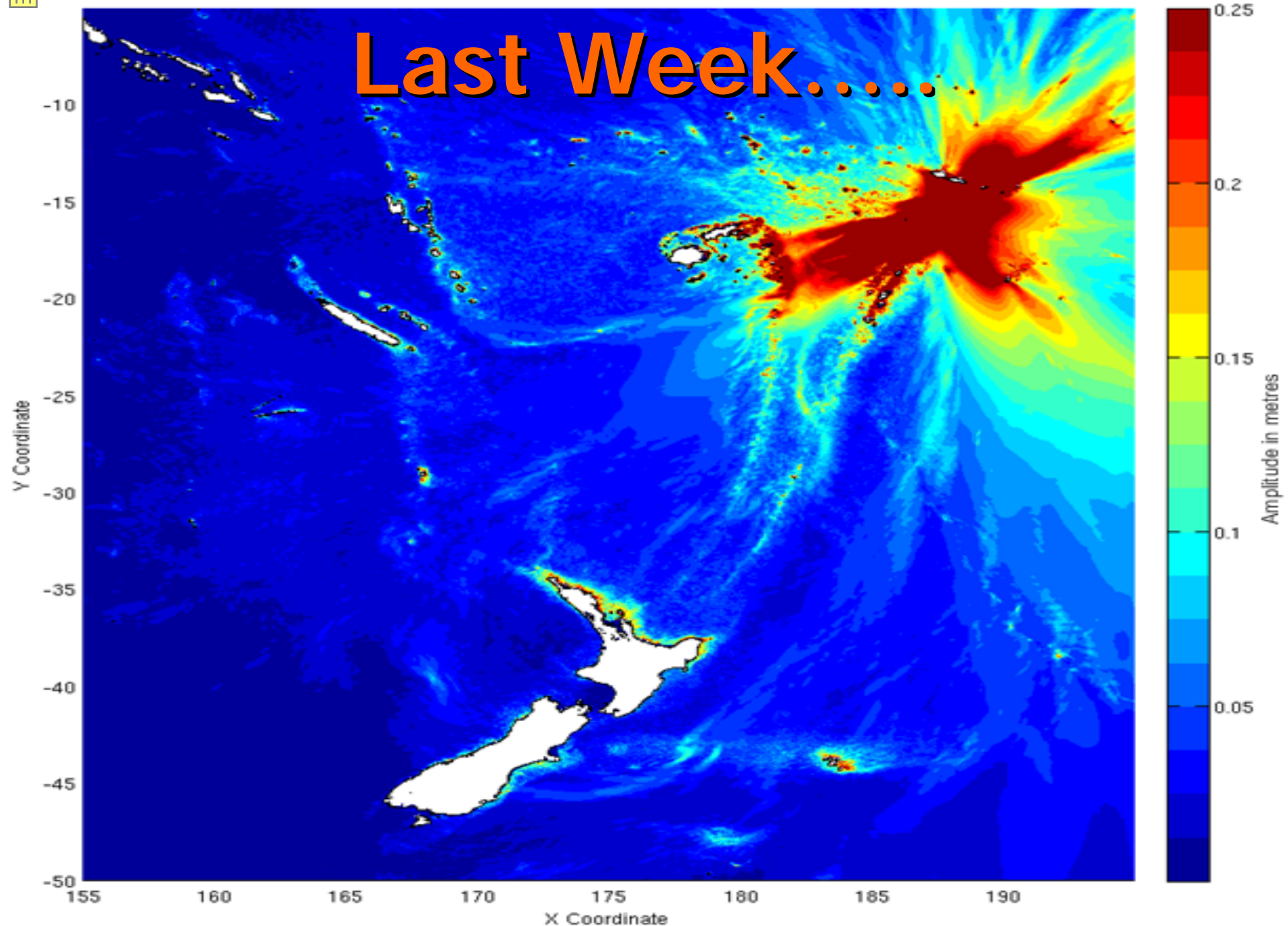
# Related Work

- MCDEM Website, Lifelines page
  - Wellington Earthquake Plan (WENIRP)
  - Support to CDEM / Lifelines Groups
  - Fast Moving Consumer Goods (FMCG)
  - Monitoring & Evaluation
- 

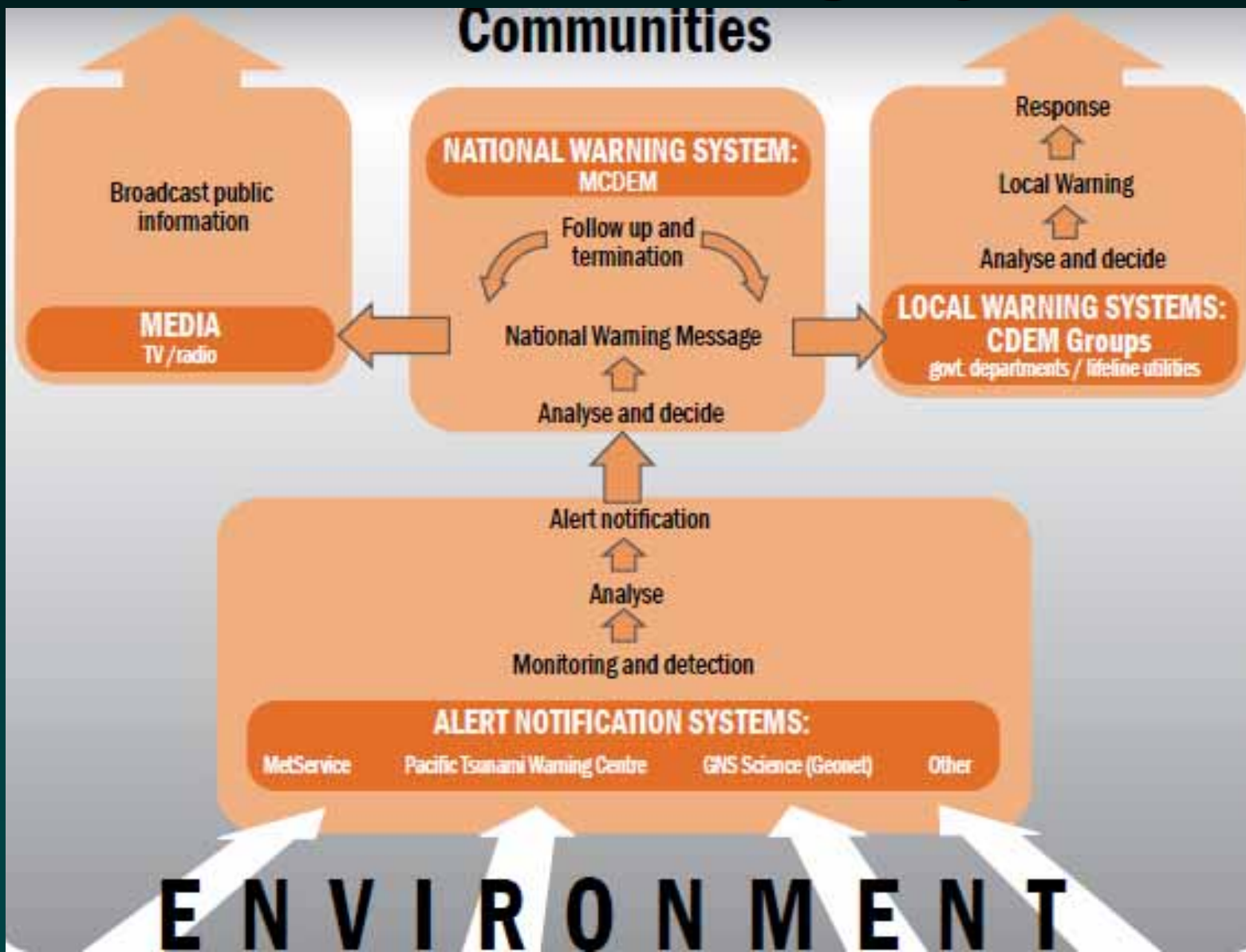
# Remember these?



Last Week.....



# National Warning System





# Team Work

...we are ALL in this together!



Te Rākau  
Whakamarumarū

Ministry of Civil Defence  
& Emergency Management

Mark Constable

[mark.constable@dia.govt.nz](mailto:mark.constable@dia.govt.nz)

04 495 6832