

CDEM Monitoring and **Evaluation**



*measuring capability and
monitoring progress*

What do we mean by **monitoring**
and evaluation in civil defence
emergency management?

It's about **asking:**

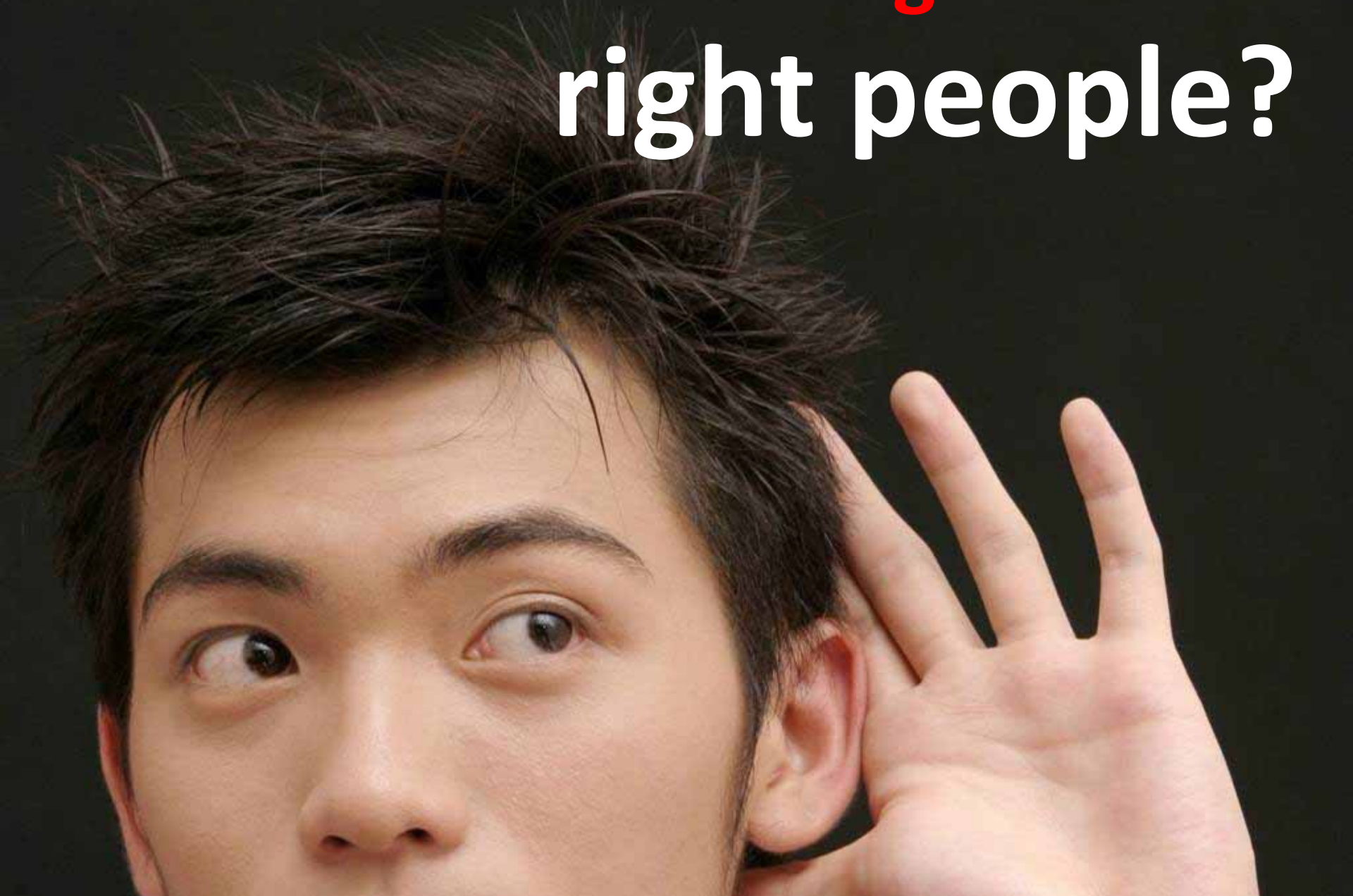
what's **working?**



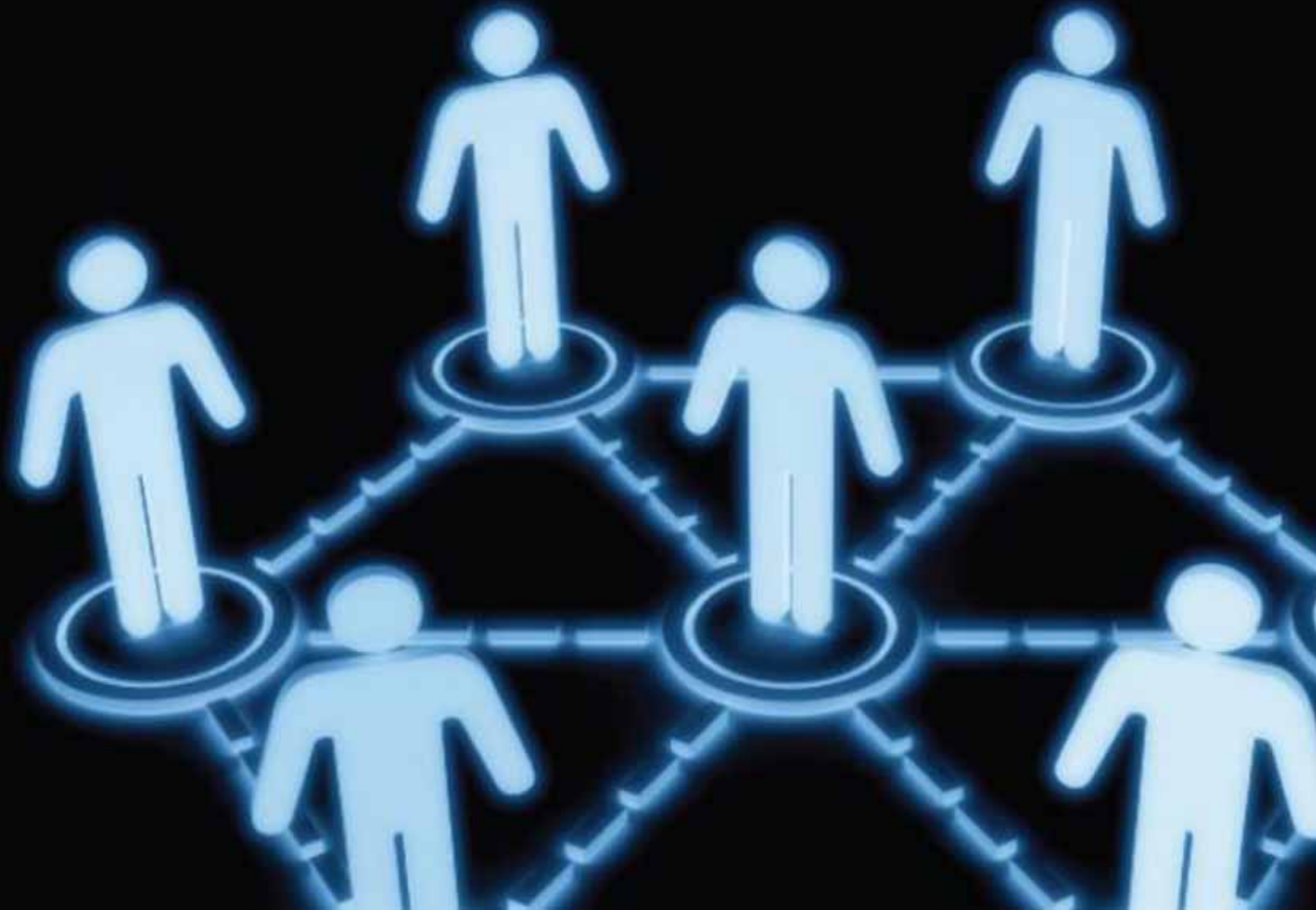
what isn't?



are we **communicating** with the
right people?



are we **linked**
effectively?





do we have the right
procedures
in place?

do we have the
right **resources?**



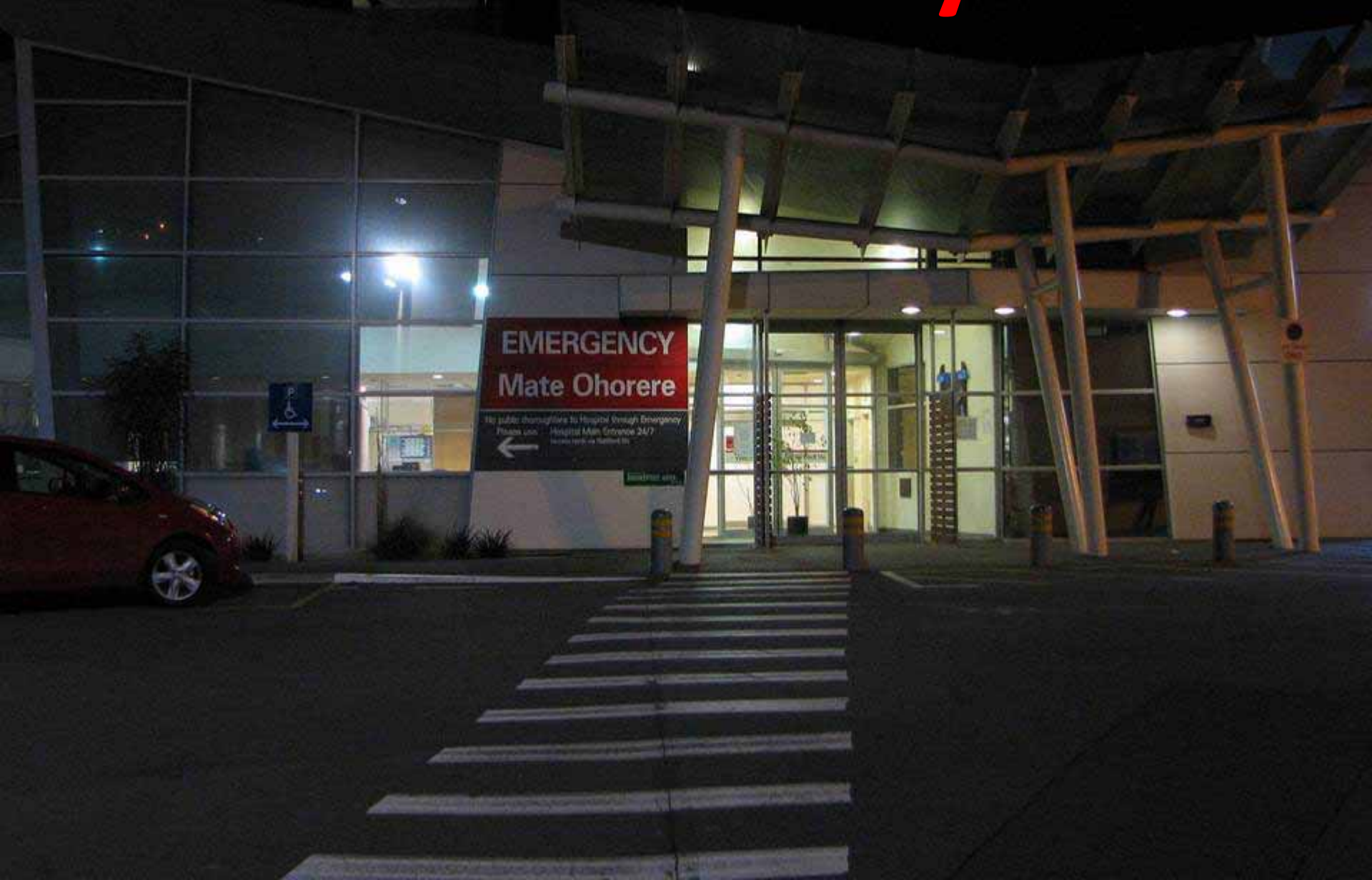
are we going in the right
direction?





are we doing all
the things
we should be?

are we **ready?**





**monitoring and
evaluation seeks
evidence-based
answers to these
questions**

the benefits

1 **strategic planning** – monitoring and evaluation shows strengths and weaknesses, and helps us plan future work



2 **organisational learning** – knowledge gained through M&E enables organisational development



3 **accountability** – gives stakeholders assurance that commitments (legislative, strategic) are being fulfilled



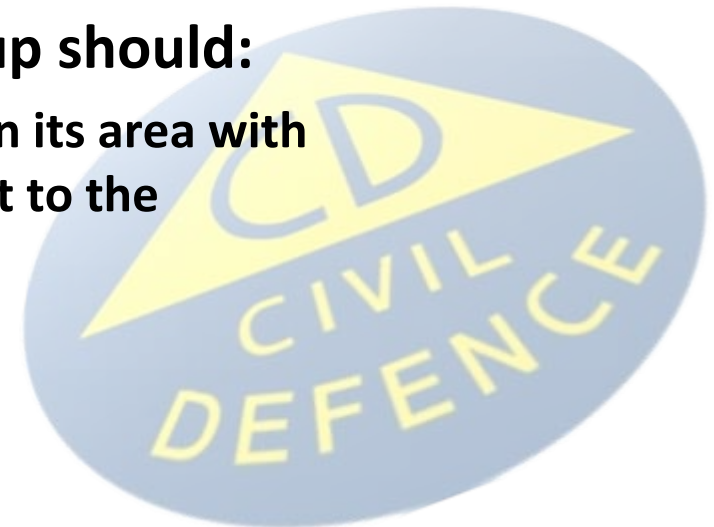
There are also requirements for monitoring and evaluation in the **CDEM Act**

the Director CDEM should:

- “monitor and evaluate the national civil defence emergency management **Strategy**” - s8(2)(c), CDEM Act
- “develop, monitor, and evaluate the national civil defence emergency management **Plan**” s8(2)(d)
- “monitor the performance of **CDEM Groups and persons who have responsibilities under this Act**” - s8(2)(f)

CDEM Groups, each member of the Group should:

- “monitor and report on compliance within its area with this Act and legislative provisions relevant to the purpose of this Act” – s17(1)(h)



CDEM Monitoring and Evaluation Programme

*measuring capability and
monitoring progress*





Aims of the CDEM Monitoring and Evaluation Programme

- 1. to measure the capability of individual organisations involved in CDEM**
- 2. to get a snapshot of national capability**



**and generally...
encourage a
monitoring and
evaluation
culture in CDEM**

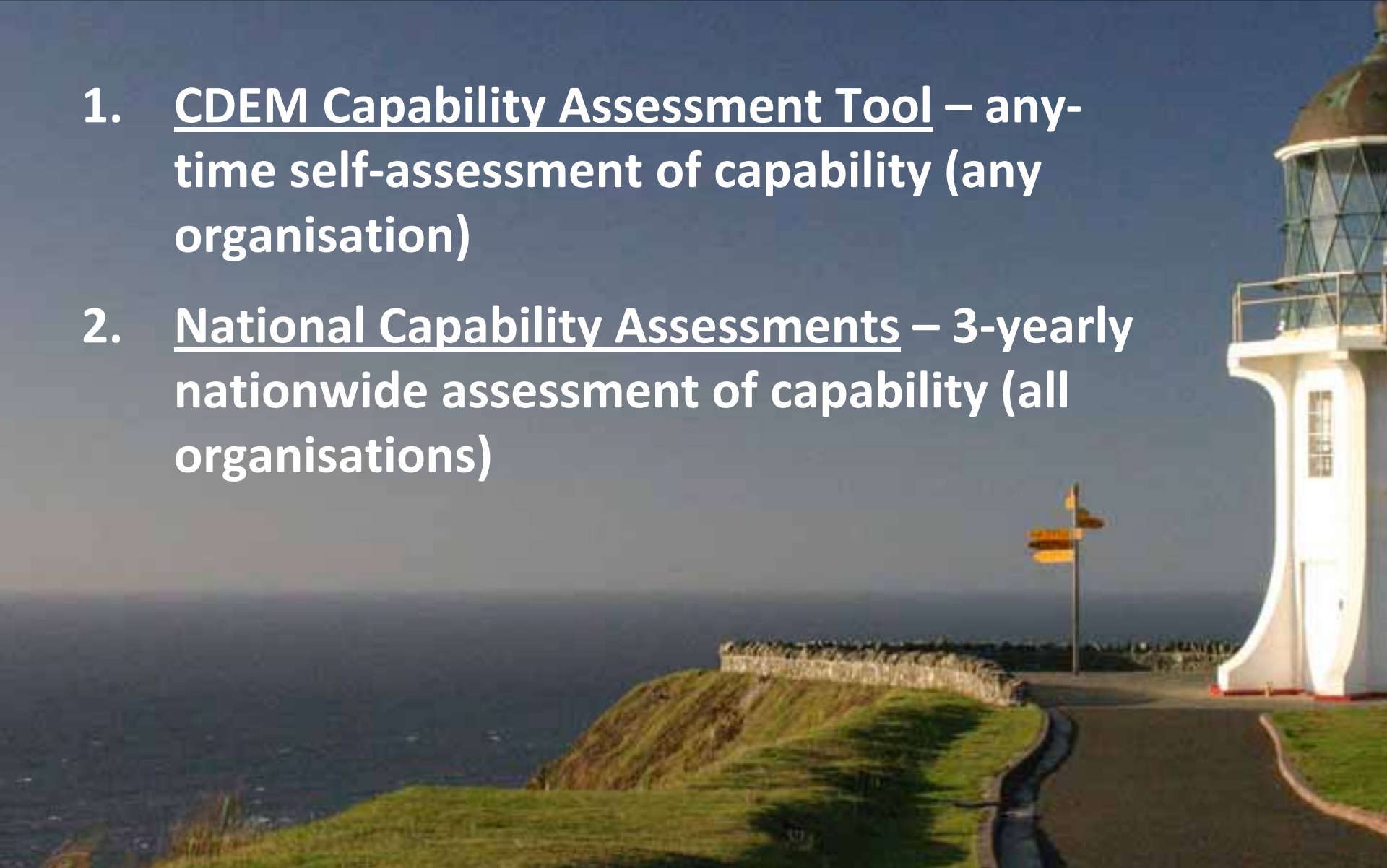
Follows **International** Examples

- **UK National Capabilities Survey**
- **US Capability Assessment for Readiness**
- **RSA Disaster Management Assessment Tool**



Two Main Parts

1. CDEM Capability Assessment Tool – any-time self-assessment of capability (any organisation)
2. National Capability Assessments – 3-yearly nationwide assessment of capability (all organisations)



1. CDEM Capability Assessment Tool

- **nationally-consistent performance criteria**
- **covers questions of compliance, performance and outcomes**
- **assessment tool format**
- **flexible**
- **a standard measurement of CDEM capability for New Zealand**



Areas the Assessment Tool Covers

Public Education

Welfare

CEG

Local Authorities

Risk Profile

CDEM Groups

Community Resilience

CDEM Planning

Communications

Business Continuity Management

Control and Coordination

Public Information

Warning Systems

Emergency Services

Exercising

Government Departments

Lifelines Coordination

Risk Reduction

Hazard Monitoring

Information Management

Risk Assessment

Resources and Logistics

Governance

CDEM Research

Lifelines

Professional Development

Recovery

Events of National Significance

MCDEM

Funding for CDEM

Areas the Assessment Tool Covers

Public Education

Welfare

CEG

Local Authorities

Risk Profile

CDEM Groups

Community Resilience

CDEM Planning

Communications

Business Continuity Management

Control and Coordination

Public Information

Warning Systems

Emergency Services

Exercising

Government Departments

Lifelines Coordination

Risk Reduction

Hazard Monitoring

Information Management

Risk Assessment

Resources and Logistics

Governance

CDEM Research

Lifelines

Professional Development

Recovery

Events of National Significance

MCDEM

Funding for CDEM

Development to Date

- **Project started July 2008**
- **Concentration on local authorities/CDEM Groups**
- **Collaboratively developed**
- **CDEM Groups side completed October 2009**
- **Intention to begin engagement with**
 - **Government Departments**
 - **Emergency Services**
 - **Lifeline Utilities**





Goal 1: To increase community awareness, understanding, preparedness and participation in civil defence emergency management

Instructions: Complete the yellow section by putting a '1' in the relevant percentage box, or N/A if the measure isn't applicable to your organisation

Strategy	Objective	Capability Criteria		Answers						Scoring					
		Key Performance Indicators	Performance Measures	RETURNS	MO (0%)	20%	40%	60%	80%	YES (100%)	N/A	SCORE	Auto Weighting	Weighted Score	
Encourage and enable wider community participation in hazard risk management		1 Organisation has well-established policies and procedures for managing volunteers	1 Organisation has a structured training programme for volunteers	1	1							20	0.14	3	
			2 Organisation has enough volunteers to fulfil identified needs	1		1							40	0.14	6
			3 Volunteer groups and individuals are effective when responding to CDEM events	1	1									20	0.14
		2 Community organisations' CDEM initiatives are supported and encouraged	1 Organisation gives advice on civil defence preparedness or business continuity management to organisations and private businesses	1						1			80	0.14	11
			2 Organisation undertakes specific activities aimed at hazard/risk awareness in schools	1			1						60	0.20	12
			3 Organisation provides resources for community-level civil defence/preparedness activities	1			1						60	0.20	12
			4 Organisation provides other support for community-level groups, e.g. arranges or undertakes speaking opportunities, face-to-face meetings etc	1			1						60	0.20	12
		1 Information on hazards and risks is readily available to the public	2 Organisation proactively undertakes specific activities with 'vulnerable communities' identified in hazard/risk assessment [e.g. tsunami or flood-prone areas]	1		1							40	0.20	8
			1 Hazard events over organisation's jurisdiction are recorded	1						1			80	0.20	16
			2 Hazard risk information is collected and stored in a central database or register	1	1								20	0.20	4
	3 Hazard risk information is readily available and displayed in a form that is understandable by members of the public	1			1						60	0.20	12		
	4 Costs of access to hazard risk information are reasonable										80	0.20	16		
		5 Hazard risk information is proactively distributed to at-									50	0.20	12		

Welcome to the CDEM Capability Assessment Tool v. 4.0 (FINAL)

Introduction

The CDEM Capability Assessment Tool is a self-assessment tool for any organisation level civil defence emergency management to assess its capability to manage emergencies.

The assessment tool is a set of nationally consistent performance indicators and measure structure is based on the National CDEM Strategy, and essentially covers the '30' of emergency management (as well as issues of administration, legislation and governance).

While use of the assessment tool is primarily voluntary, the CDEM Capability Assessment also support a periodic national reporting cycle, in which all organisations with responsibility under the CDEM Act 2002 will be asked to complete an assessment to document our collective national CDEM capability.

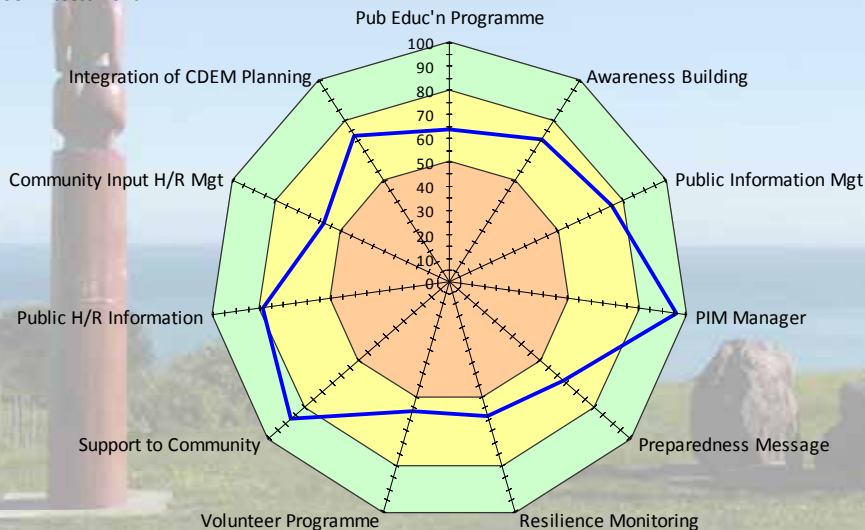
Background and Instructions

A background to CDEM monitoring and evaluation, and instructions for using the tool are in the next 4 worksheets. It may be useful to print these worksheets ('ART CDEM M&E', 'INST OVERVIEW', and 'CAPABILITY CRITERIA') in order to read background and print the results. The set-up to print...

Any problems...

- Target Environment
- Satisfactory
- Requires Attention
- Group Self-Assessment

Goal 1 Key Performance Indicators



Bay of Plenty
Civil Defence Emergency Management
Capability Assessment Report
A pilot study of the CDEM Capability Assessment Tool

June 2009



Lifelines Section

- **Would like your involvement!**
- **'Straw man' section in current version of the tool**
 - Needs further development
 - Will seek interested parties
 - To be finished by June 2010



Development of Lifelines Section

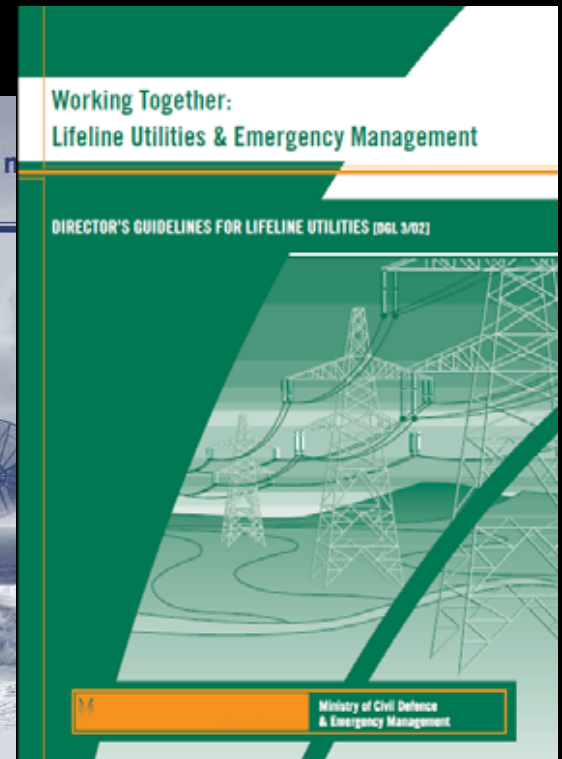
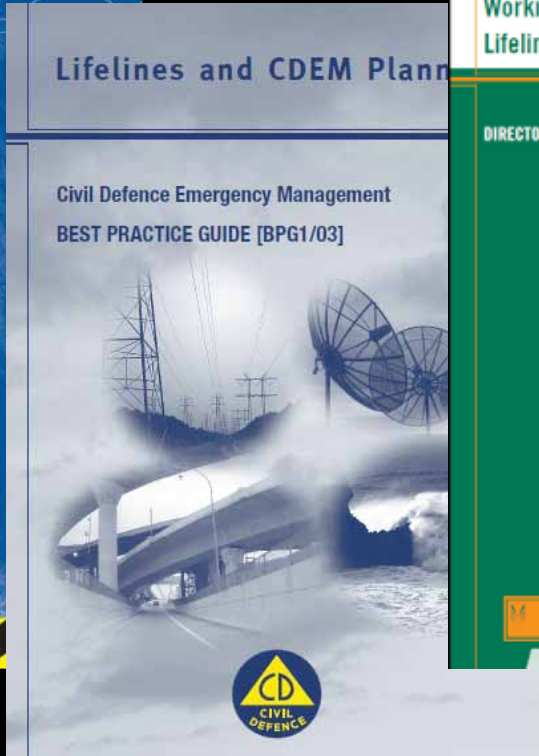
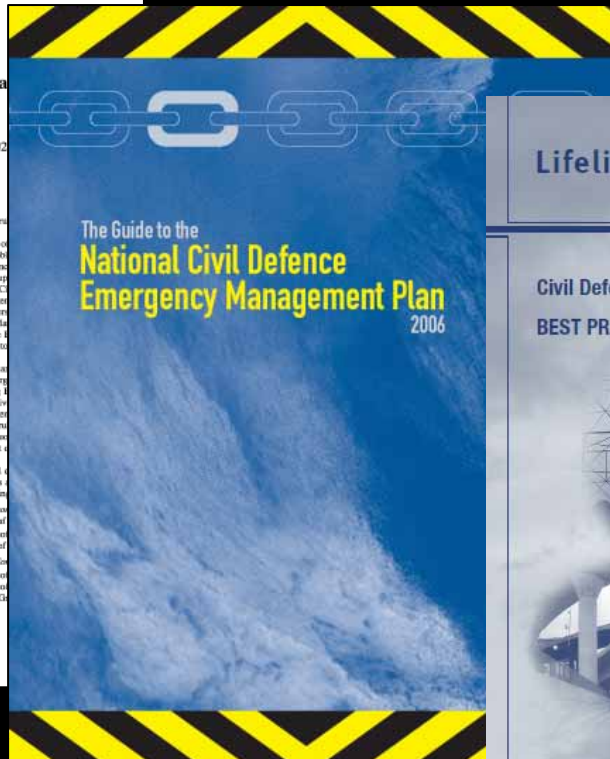


Civil Defence Emergency Management Act 2002

Public Act 2002 No 33
Date of assent 17 October 2002
Commencement see section 2

Contents

1	Title	14	Membership of authorities
2	Commencement	15	Appointment of
	Part 1	16	Powers and obligations of Civil Defence Emergency Management Groups
3	Preliminary provisions	17	Functions of Civil Defence Emergency Management Groups
4	Purpose	18	General powers
5	Interpretation	19	Emergency Management Groups
6	Act to bind the Crown	20	Appointment of
7	Act not to affect functions, duties, and powers under other Acts or general law	21	Co-ordinating Officers
8	Precautionary approach	22	Managers of Civil Defence Emergency Management Groups
	Part 2	23	Membership of
9	Appointment, functions, and powers of persons involved in civil defence emergency management	24	government and
10	Director of Civil Defence Emergency Management	25	Establishment of
11	Appointment and functions of Director of Civil Defence Emergency Management	26	authorities
12	Powers of Director	27	Functions and
13	National Controller	28	controlling authorities of administration
14	Delegation of certain functions and powers of Director to National Controller		Appointment of persons
15	Further provisions relating to delegation to National Controller		state of local
	Civil Defence Emergency Management Groups		Appointments or
16	Local authorities to establish Civil Defence Emergency Management Groups		declare state of
17	Membership of Civil Defence Emergency Management Groups		Group Civil
18			Appointment of
19			Appointment of
20			Functions of



2. National Capability Assessments

- to be run every three years
- all agencies with responsibilities under the CDEM Act
- result in a 'National Capability Assessment Report'
- will report trends, strengths, weaknesses, gaps
- to Government and CDEM sector



First National Capability Assessment

- To be launched October 2009
- CDEM Groups have just over 1 year to complete an assessment (due by December 2010)
- National agencies (government departments, emergency services, lifeline utilities) to be included, but lesser role
 - Likely in second half of 2010



Summary

CDEM Monitoring and Evaluation Programme

*measuring capability and
monitoring progress*



is about...

A group of people, including men and women, are working on a construction site. They are standing on a muddy bank next to a large concrete structure, possibly a dam or levee. The structure is covered with a white plastic sheeting. Several white sandbags are visible, some stacked and some being handled by the workers. The workers are wearing various work clothes, including jackets, hats, and gloves. The background shows a body of water and a grassy area. The text "analysing what we do" is overlaid on the image in white and red font.

analysing what we do

An elderly man with glasses is shown in a close-up, low-angle shot, leaning over a patch of green grass. He is using a pair of black-handled scissors to cut the grass. His hands are the primary focus, with the scissors held between his fingers. The background is slightly blurred, showing a grassy area and some trees. A semi-transparent dark grey banner with white and red text is overlaid across the middle of the image.

finding **more effective** ways to do things



informing
what we do in
the **future**

further questions



Jo Horrocks

Team Leader National Planning

jo.horrocks@dia.govt.nz