

# AEGIS MAP

Agency Enhanced Geographic Information Systems MAP

## Pilot Project: Prototype

A Joint Manawatu-Wanganui & Hawkes Bay Project



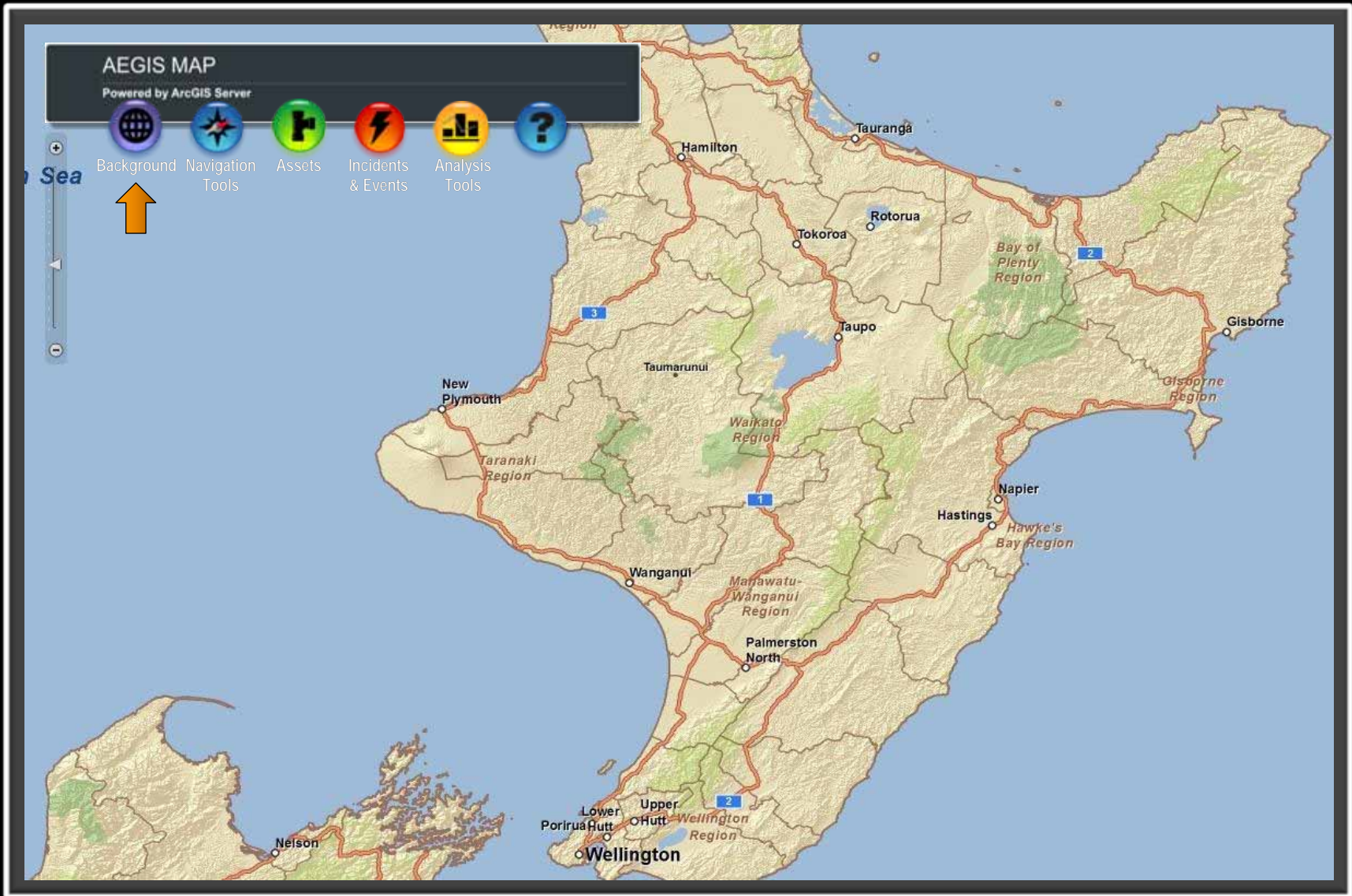
# AEGIS MAP

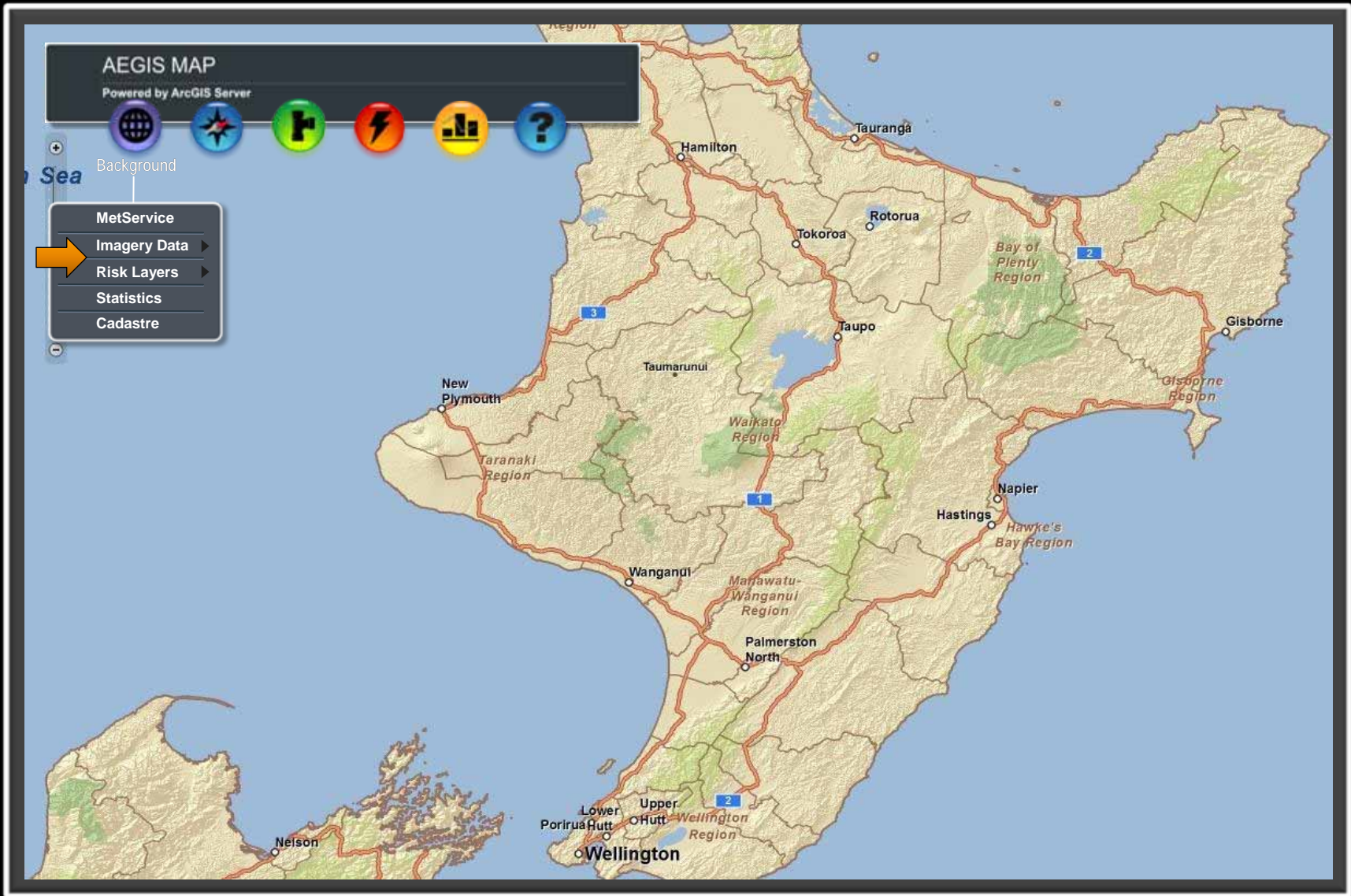
User ID: Agency

Password: \*\*\*\*\*

OK









# AEGIS MAP

Powered by ArcGIS Server



Navigation Tools

- Zoom In
- Zoom Out
- Full Extent
- Move Map
- Search
- Identify



# AEGIS MAP

Powered by ArcGIS Server

Current Action: Navigation



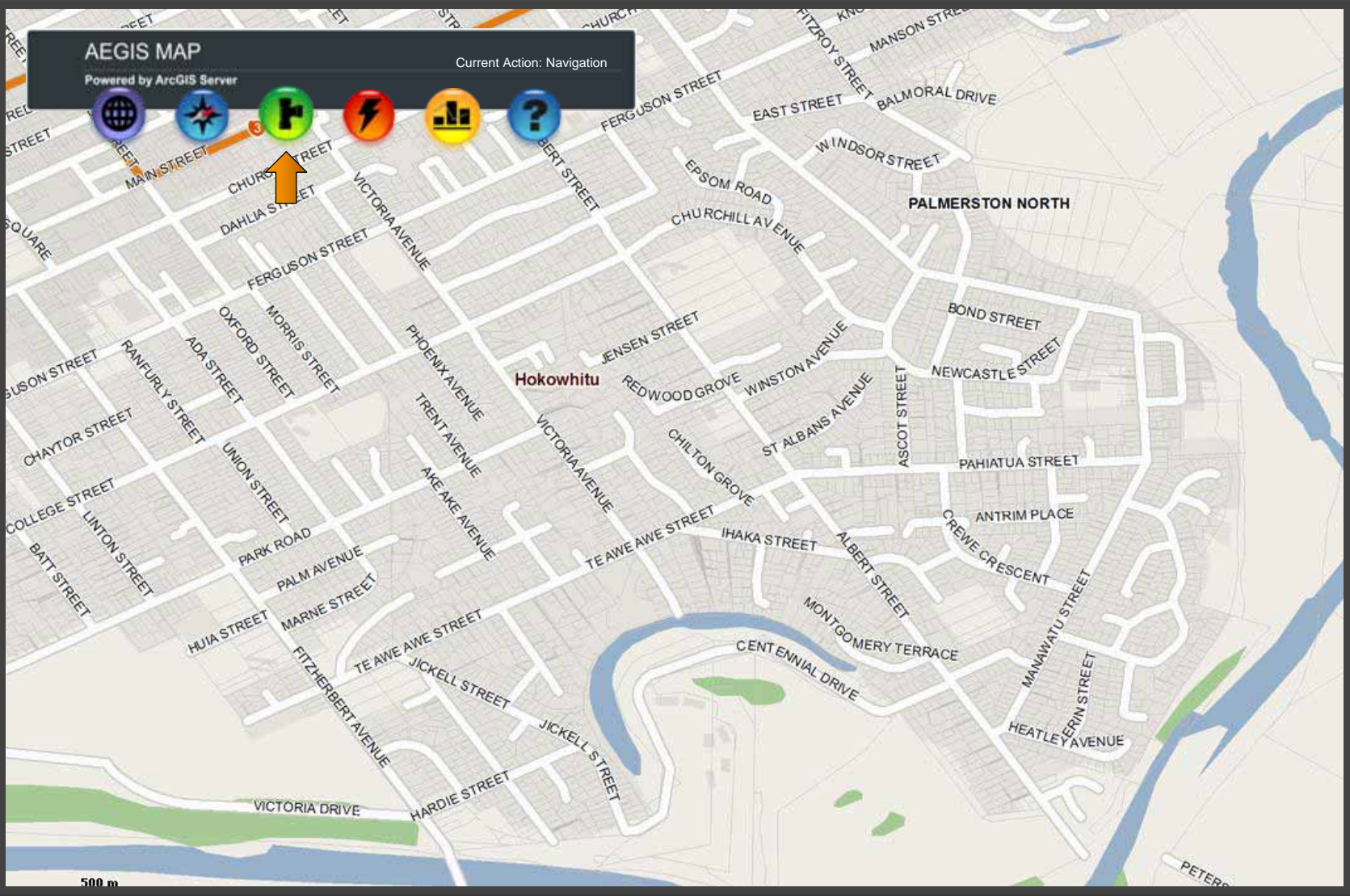
Sea



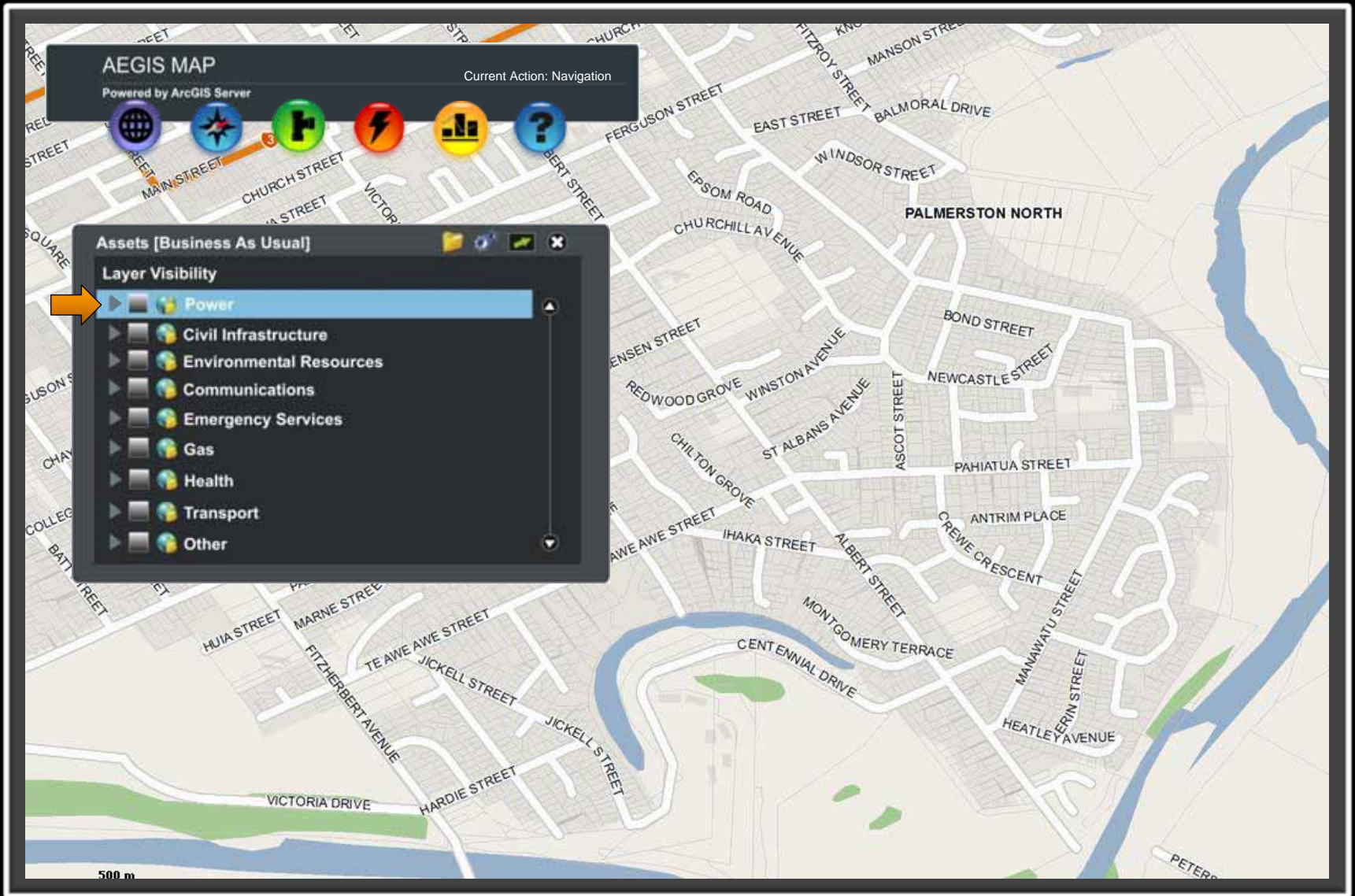
AEGIS MAP

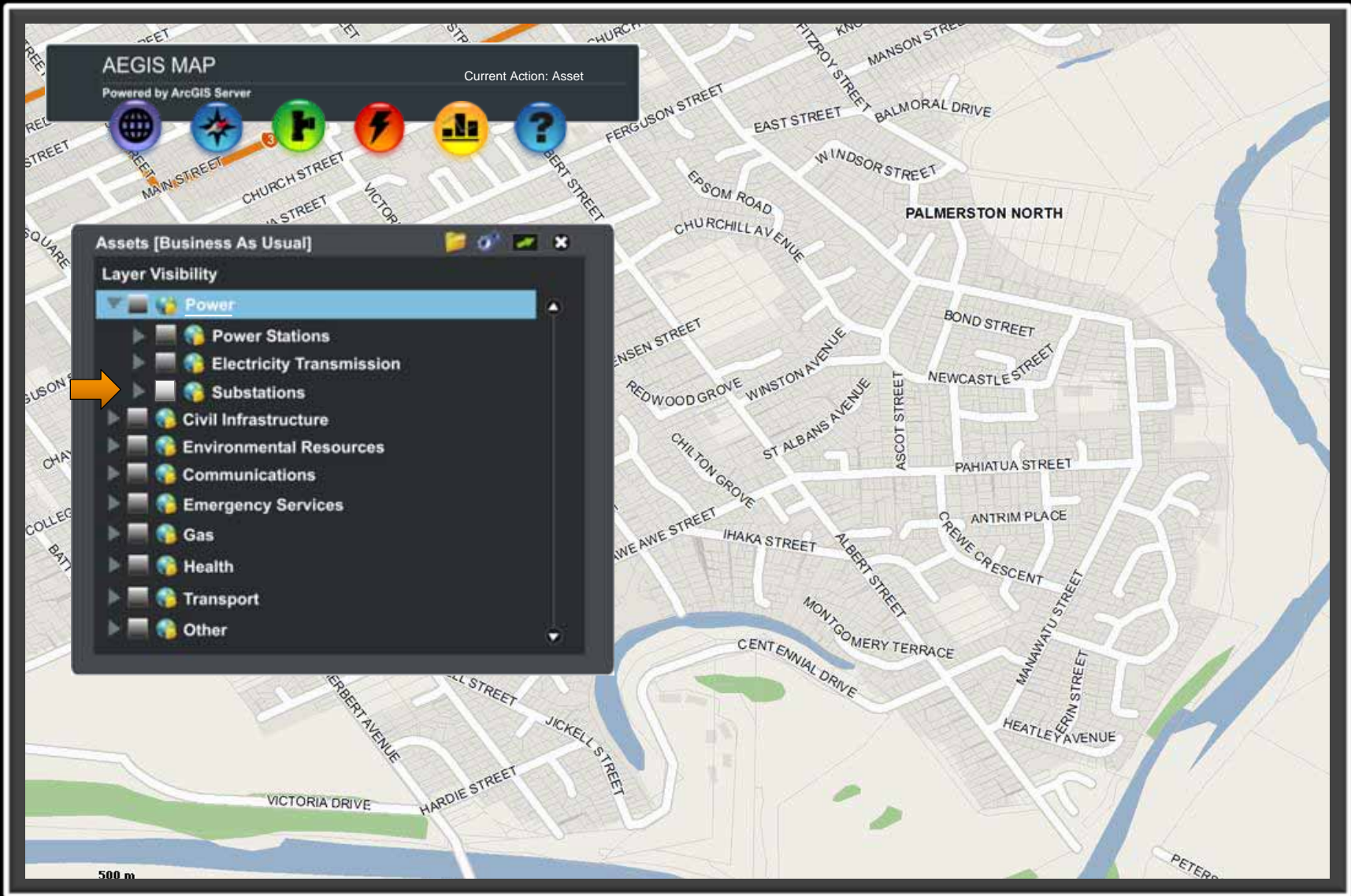
Powered by ArcGIS Server

Current Action: Navigation









# AEGIS MAP

Powered by ArcGIS Server

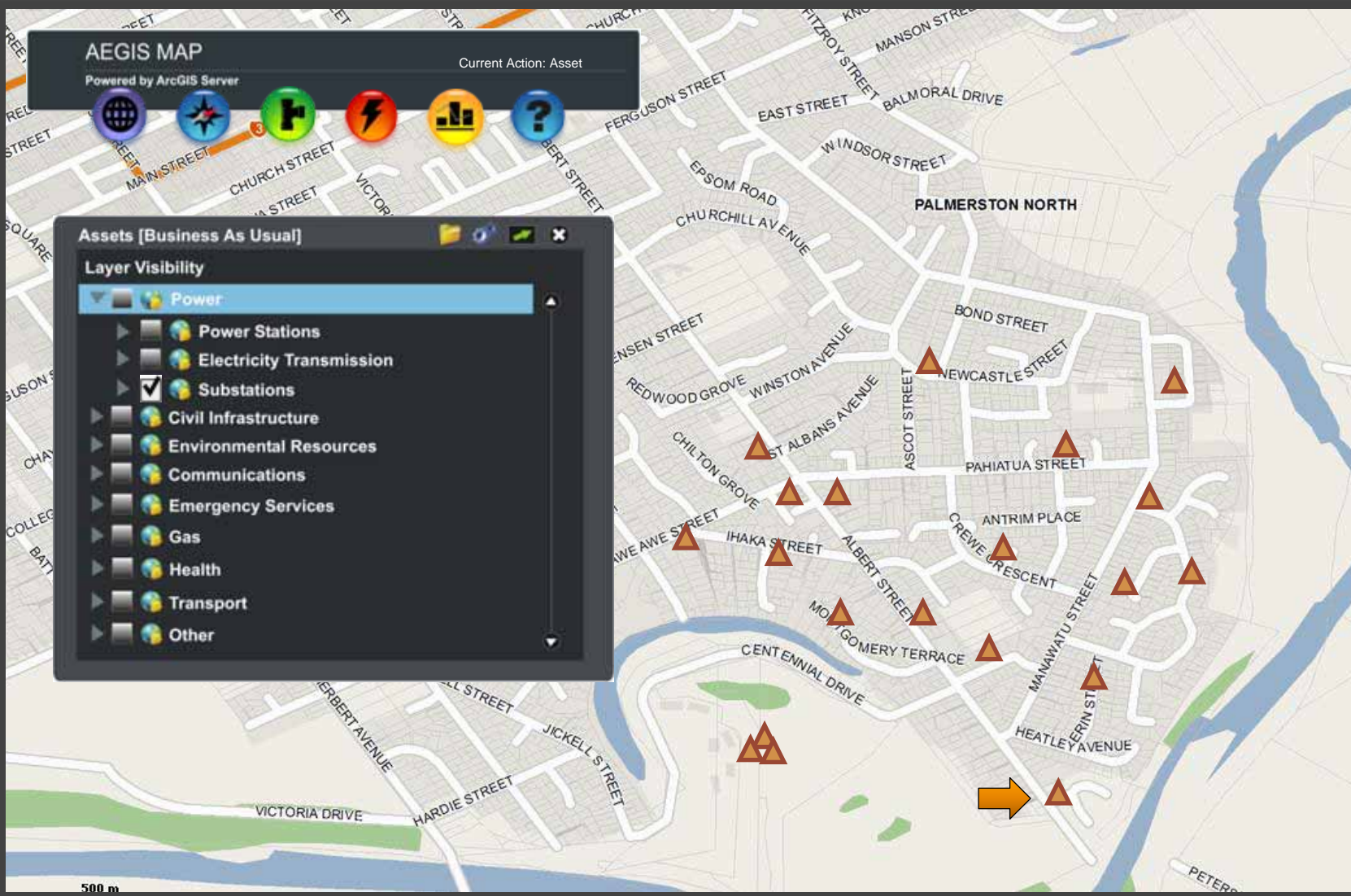
Current Action: Asset

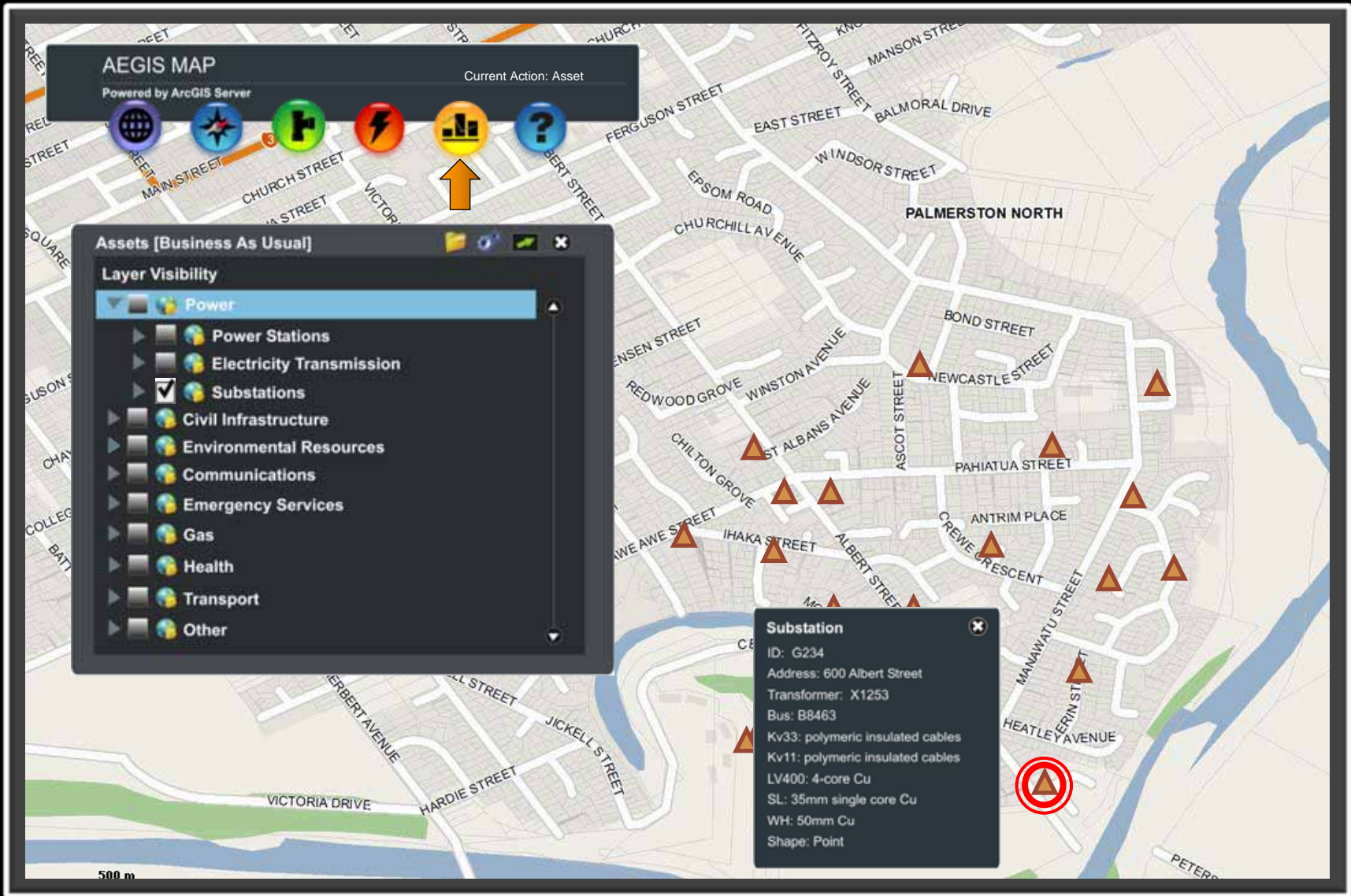


## Assets [Business As Usual]

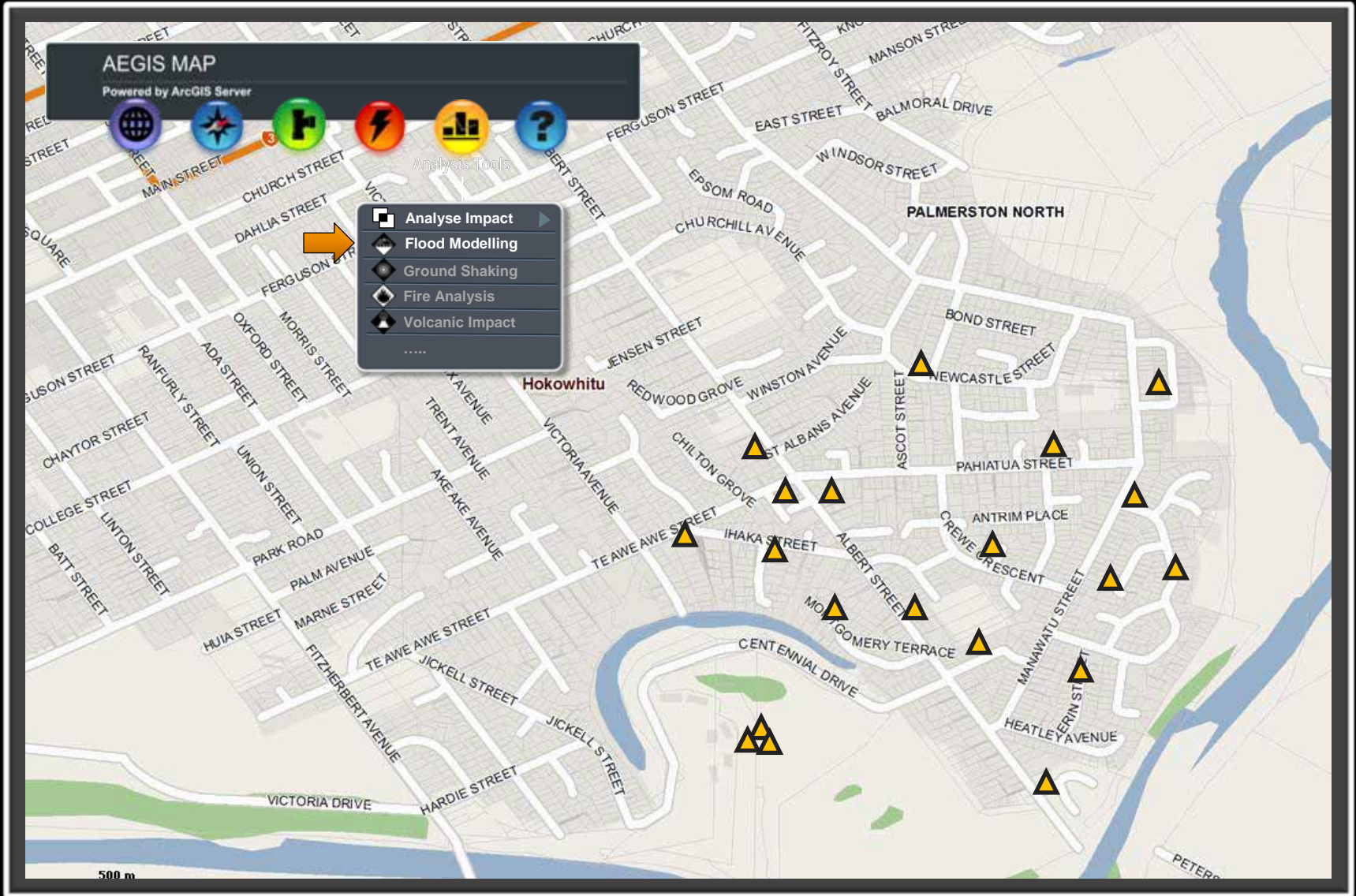
### Layer Visibility

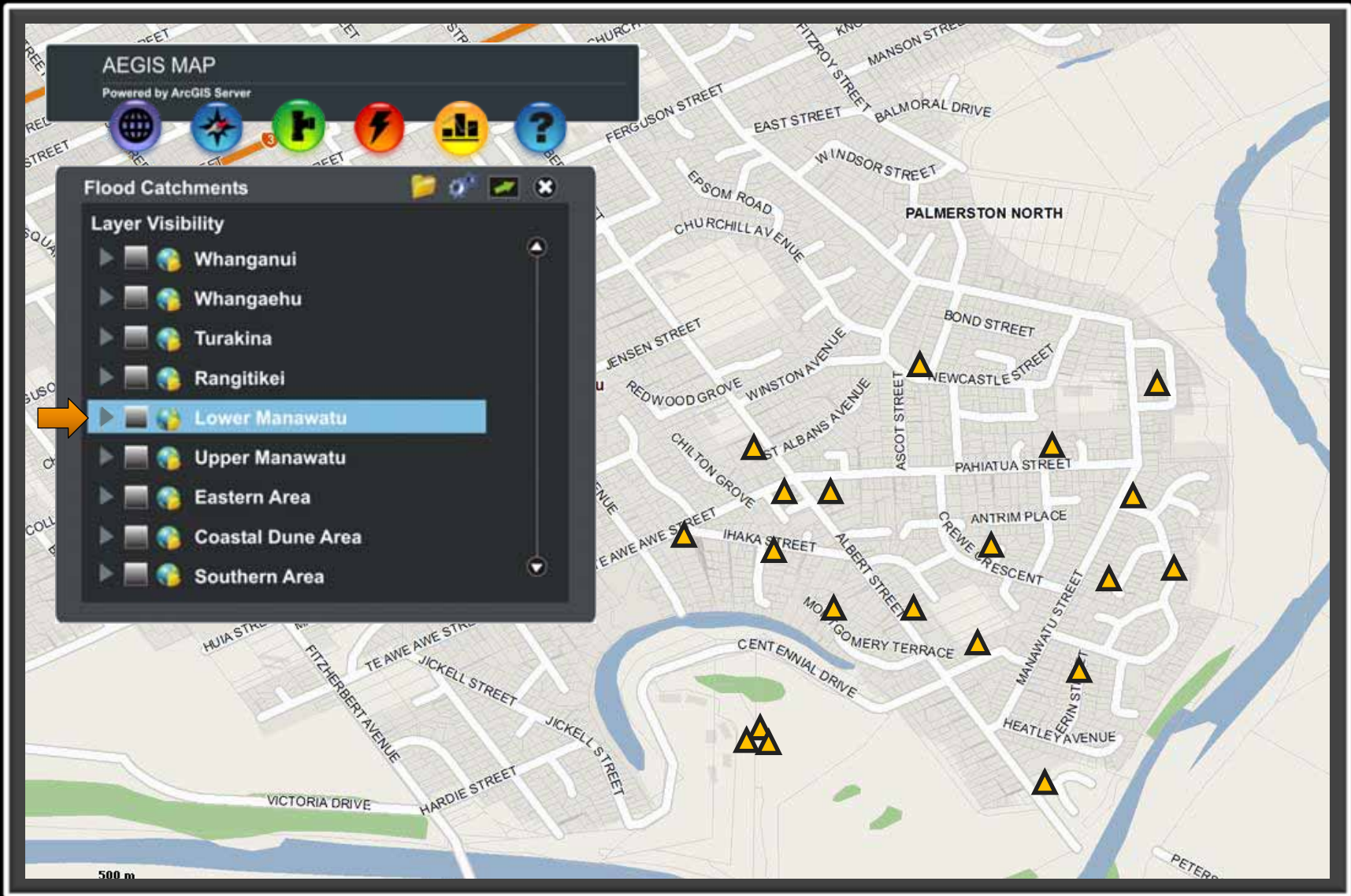
- Power
  - Power Stations
  - Electricity Transmission
  - Substations
  - Civil Infrastructure
- Environmental Resources
- Communications
- Emergency Services
- Gas
- Health
- Transport
- Other





# Flood Scenario: Check existing flood models





AEGIS MAP

Powered by ArcGIS Server



Flood Catchments

Layer Visibility

- Lower Manawatu
- Lower Manawatu River
- Whakarongo/Staces Road
- Palmerston North City
- Taonui Basin
- Makerua
- Shannon
- Moutoa
- Koputaroa
- Moutoa North
- Foxton Beach
- General
- Pohangina Catchment
- Mangaone Stream
- Small tributaries
- Taonui Basin



500 m

AEGIS MAP

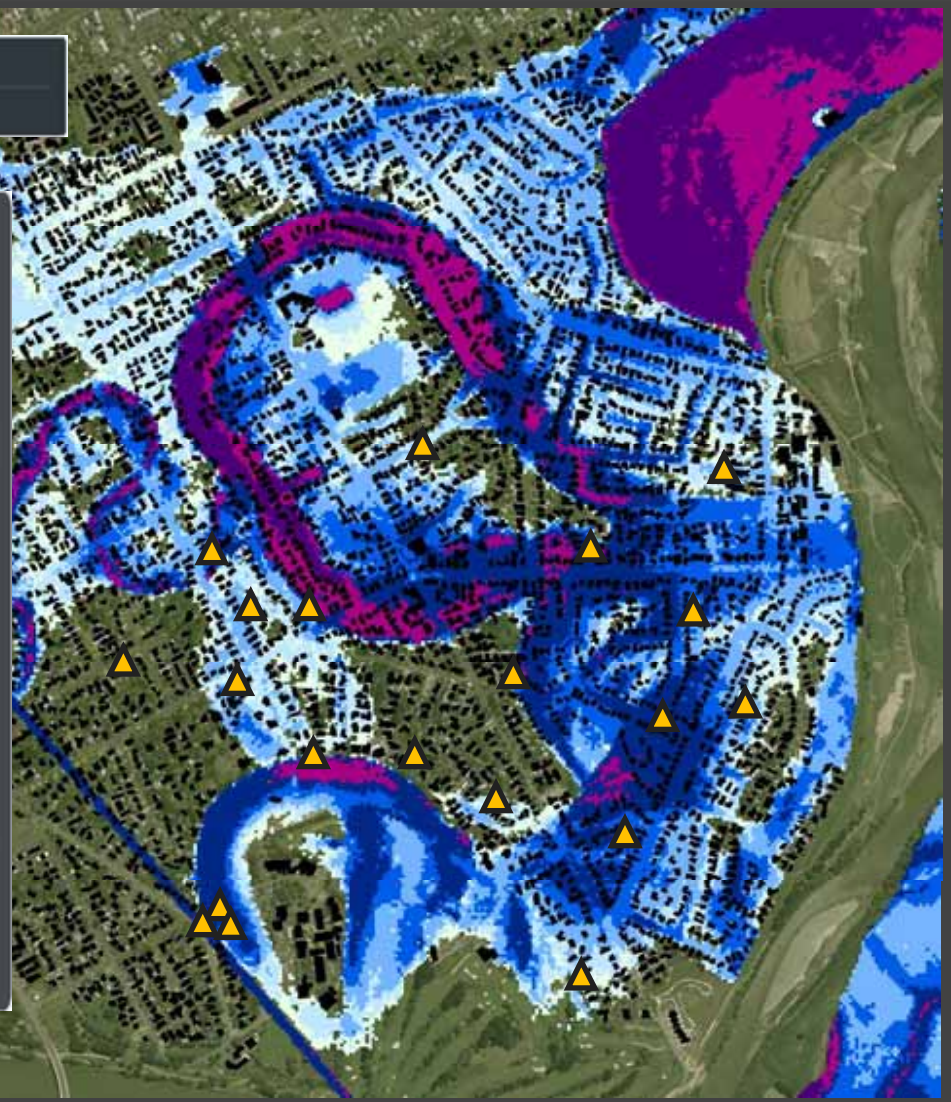
Powered by ArcGIS Server



Flood Catchments

Layer Visibility

- Lower Manawatu
- Lower Manawatu River
- Whakarongo/Staces Road
- Palmerston North City
- Taonui Basin
- Makerua
- Shannon
- Moutoa
- Koputaroa
- Moutoa North
- Foxton Beach
- General
- Pohangina Catchment
- Mangaone Stream
- Small tributaries
- Taonui Basin





# Flood Scenario: Create a new incident



# AEGIS MAP

Powered by ArcGIS Server



Incidents & Events

- Report & Monitor Incidents/Events
- Events & Incidents Maps
- Response Status
- Incident Facilities Status
- Incident/Event History

Incidents  
Events



# AEGIS MAP

Powered by ArcGIS Server



## Monitor Incidents



New

Open Incidents

Incident #1

Incident #2

Incident #3

Close Incident

AEGIS MAP

Powered by ArcGIS Server

Current Action: Event



Point

Line

Polygon



AEGIS MAP

Powered by ArcGIS Server

Current Action: Event



Point

Line

Polygon



# AEGIS MAP

Powered by ArcGIS Server



## New Incidents

### Incident Classification

- Civil Disturbance
- Criminal Activity
- Fire
- Hazardous Material
- Air Accident
- Marine Incident
- Rail Incident
- Vehicle Incident
- Medical Incident
- Natural Disaster
- Hydro-Meteorological
- Infestation

### Incident Type

- Drizzle
- Drought
- Road Flooding
- Flood
- Fog
- Hail
- Inversion
- Rain

Start Time:  Hr  Min

Start Date:

Description:

Location:

Direct Line Distance:

Comments:

Agencies On Scene:

No of People Affected:

ICP Location:

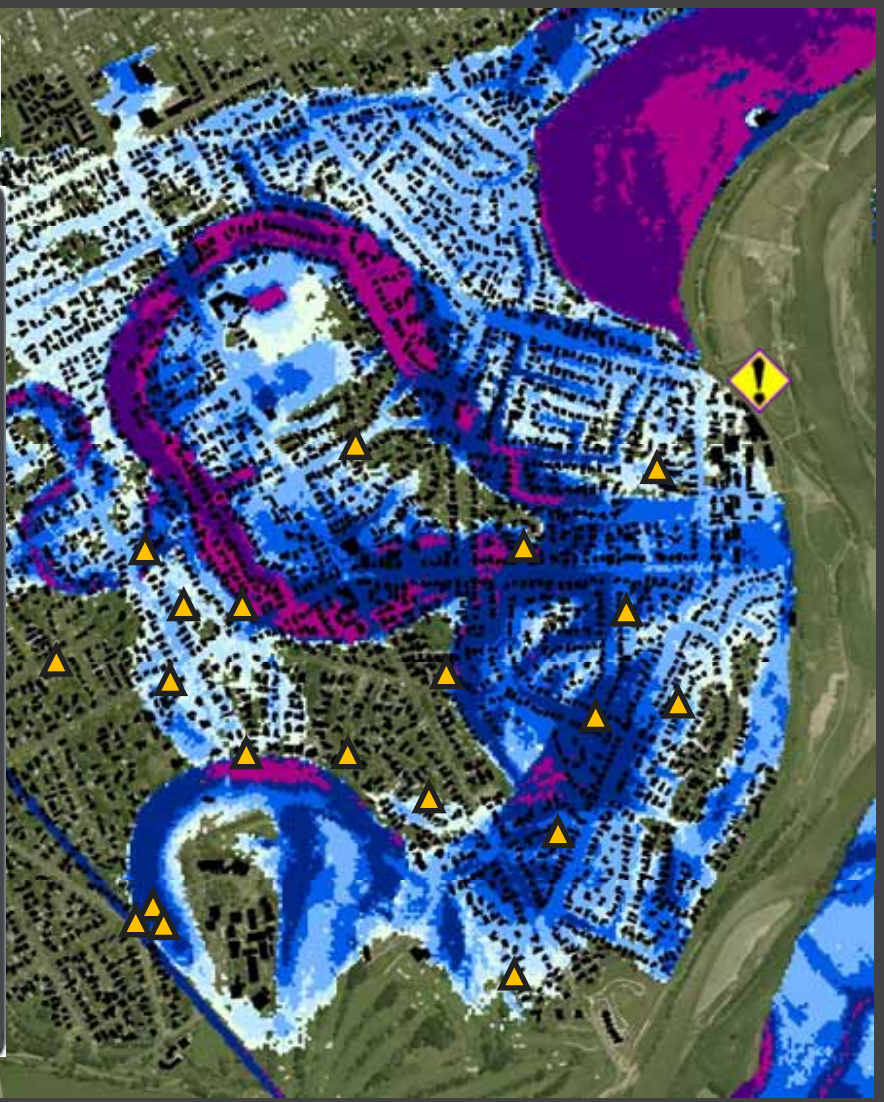
Incident Controller:



Map ICP Location

Next

DRAFT



# Flood Scenario: Locate an ICP

The screenshot displays the AEGIS MAP interface, which is powered by ArcGIS Server. The main map area shows a flood scenario with various colored overlays (blue, purple, pink) and numerous yellow triangle markers. A white circle with a black dot is labeled 'ICP' (Incident Control Point) on the map. A 'New Incidents' form is overlaid on the left side of the map. The form includes the following fields and options:

- Incident Classification:** A dropdown menu with options: Civil Disturbance, Criminal Activity, Fire, Hazardous Material, Air Accident, Marine Incident, Rail Incident, Vehicle Incident, Medical Incident, Natural Disaster, Hydro-Meteorological (highlighted), and Infestation.
- Incident Type:** A dropdown menu with options: Drizzle, Drought, Road Flooding, Flood (highlighted), Fog, Hail, Inversion, and Rain.
- Start Time:** Fields for Hr and Min.
- Start Date:** A calendar icon.
- Description:** A text input field.
- Location:** A text input field.
- Direct Line Distance:** A text input field.
- Comments:** A text input field.
- Agencies On Scene:** A text input field.
- No of People Affected:** A text input field.
- ICP Location:** A text input field.
- Incident Controller:** A text input field.

At the bottom of the form, there is a 'Map ICP Location' button and a 'Next' button with an orange arrow pointing to it. The word 'DRAFT' is visible in the bottom left corner of the form area.

# AEGIS MAP

Powered by ArcGIS Server



## New Incidents

### Lifeline Assets

Status  
Operational  
Non-operational

Impact:

Alternative Route:

Expected Resolution:

Scheduled Outage Time:

Subscribers Affected:

### Welfare Centres

Number of People:

Affected:

In Isolation:

Registered:

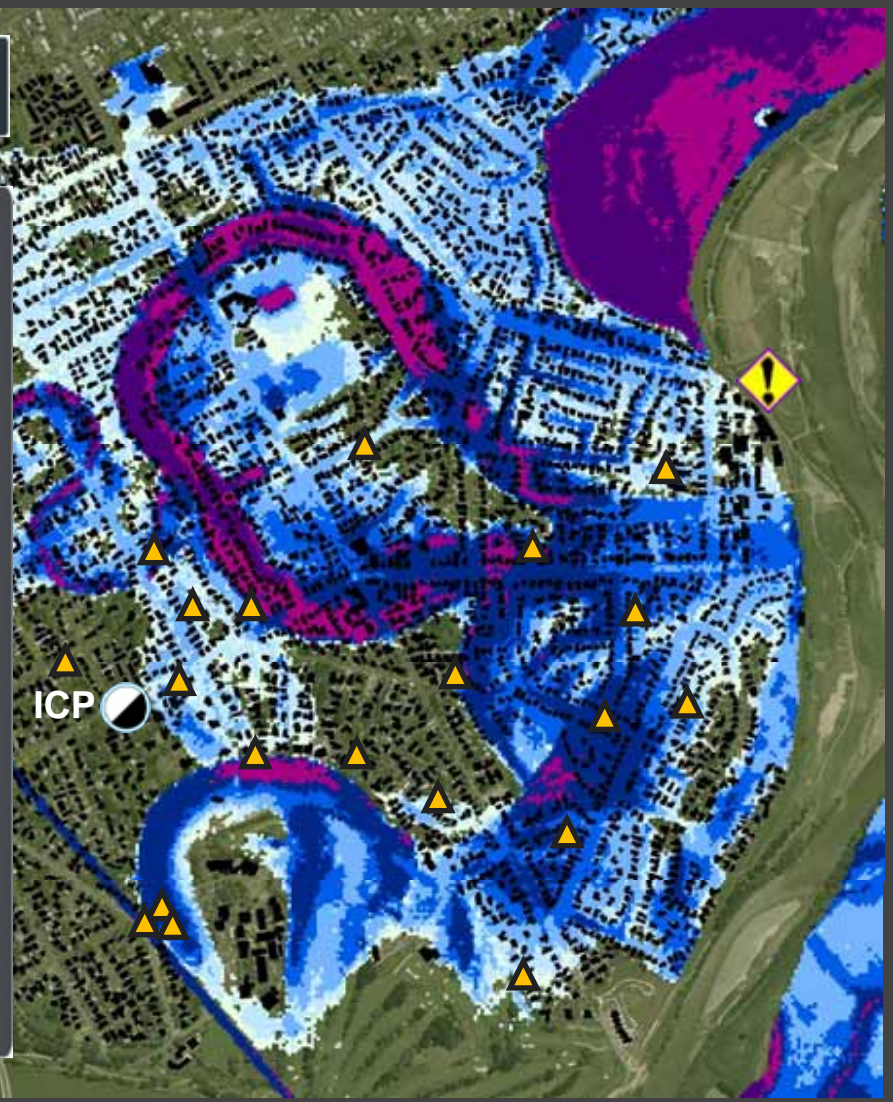
In Emergency Accommodation:

Welfare Centre Open:

Services Provided:

Previous OK

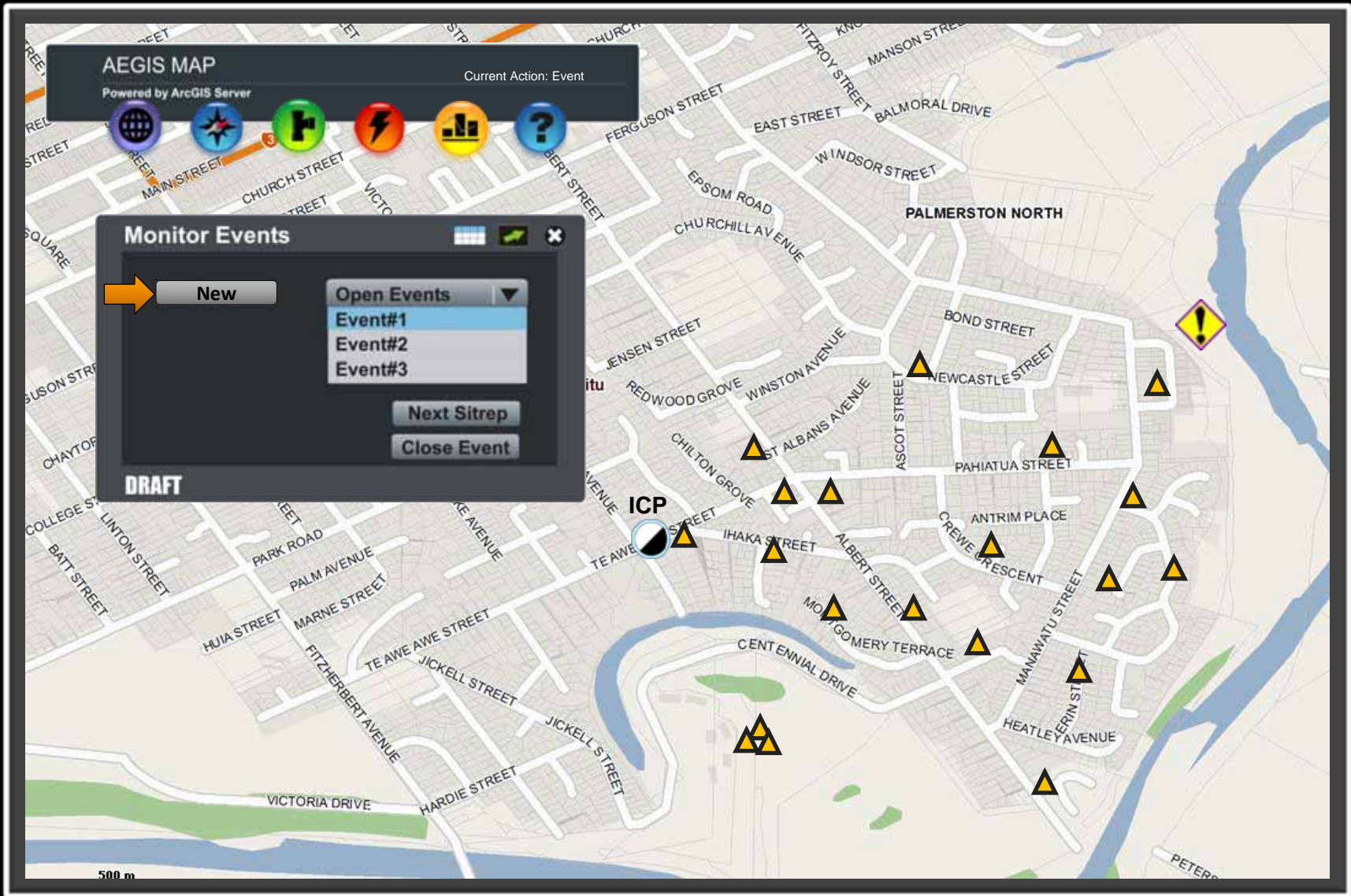
DRAFT

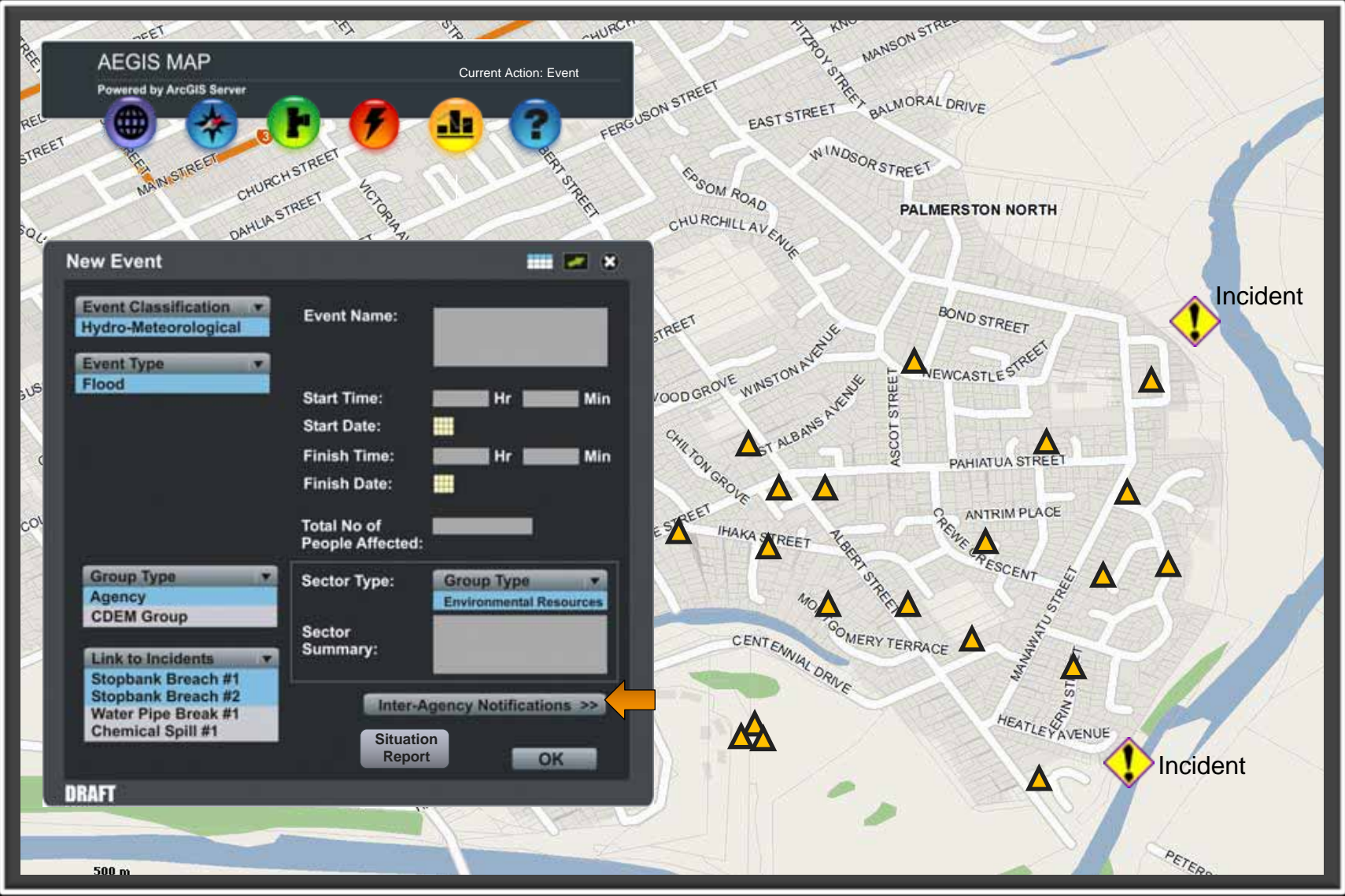




# Flood Scenario: Create an event







# Flood Scenario: Generate a Situation Report and notify Agencies

The screenshot displays the AEGIS MAP interface, which is powered by an ArcGIS Server. The main map area shows a street grid in Palmerston North, with a red lightning bolt icon indicating a flood event. A yellow arrow labeled '2' points to this icon. Overlaid on the map are two panels:

**New Event Panel:** This panel is used to create a new event. It includes the following fields and options:

- Event Classification:** Hydro-Meteorological
- Event Type:** Flood
- Event Name:** (Empty text field)
- Start Time:** (Hour and Minute spinners)
- Start Date:** (Calendar icon)
- Finish Time:** (Hour and Minute spinners)
- Finish Date:** (Calendar icon)
- Total No of People Affected:** (Text input field)
- Group Type:** Agency (Expanded list shows CDEM Group)
- Link to Incidents:** Stopbank Breach #1, Stopbank Breach #2, Water Pipe Break #1, Chemical Spill #1
- Sector Type:** Group Type (Expanded list shows Environmental Resources)
- Sector Summary:** (Text input field)
- Buttons:** Inter-Agency Notifications >>, Situation Report (highlighted with a yellow arrow labeled '1'), OK

**Inter-Agency Notifications Panel:** This panel lists various agencies and task groups for notification:

- CIVIL TASK GROUP:** Horizons Regional Council, Horowhenua DC, Manawatu DC, Palmerston North CC, Rangitikei DC, Ruapehu DC, Tararua DC, Wanganui DC
- GAS and FUEL:** Nova Gas, NGC, PowerCo, Gas Net
- ELECTRICITY:** Electra, PowerCo, Scanpower, The Lines Company, Transpower
- Health Authorities:** MidCentral Health DHB, Wanganui Health DHB
- TRANSPORT TASK GROUP:** NZTA, NZ Railways, Transfield, NZAF, Wanganui Airport, Defence Liason, Palmerston North Airport Co
- COMMUNICATION:** Telecom, Telstra-Clear, Broadcast Comms, Vodafone, Teamtalk
- Buttons:** Check All, Message Mode (SMS, Email), Send

The map background shows streets such as Main Street, Church Street, Dahlia Street, Ferguson Street, East Street, Balmoral Drive, Windsor Street, Epsom Road, Churchill Ave, and Palmerston North. A yellow warning icon is visible on the right side of the map.

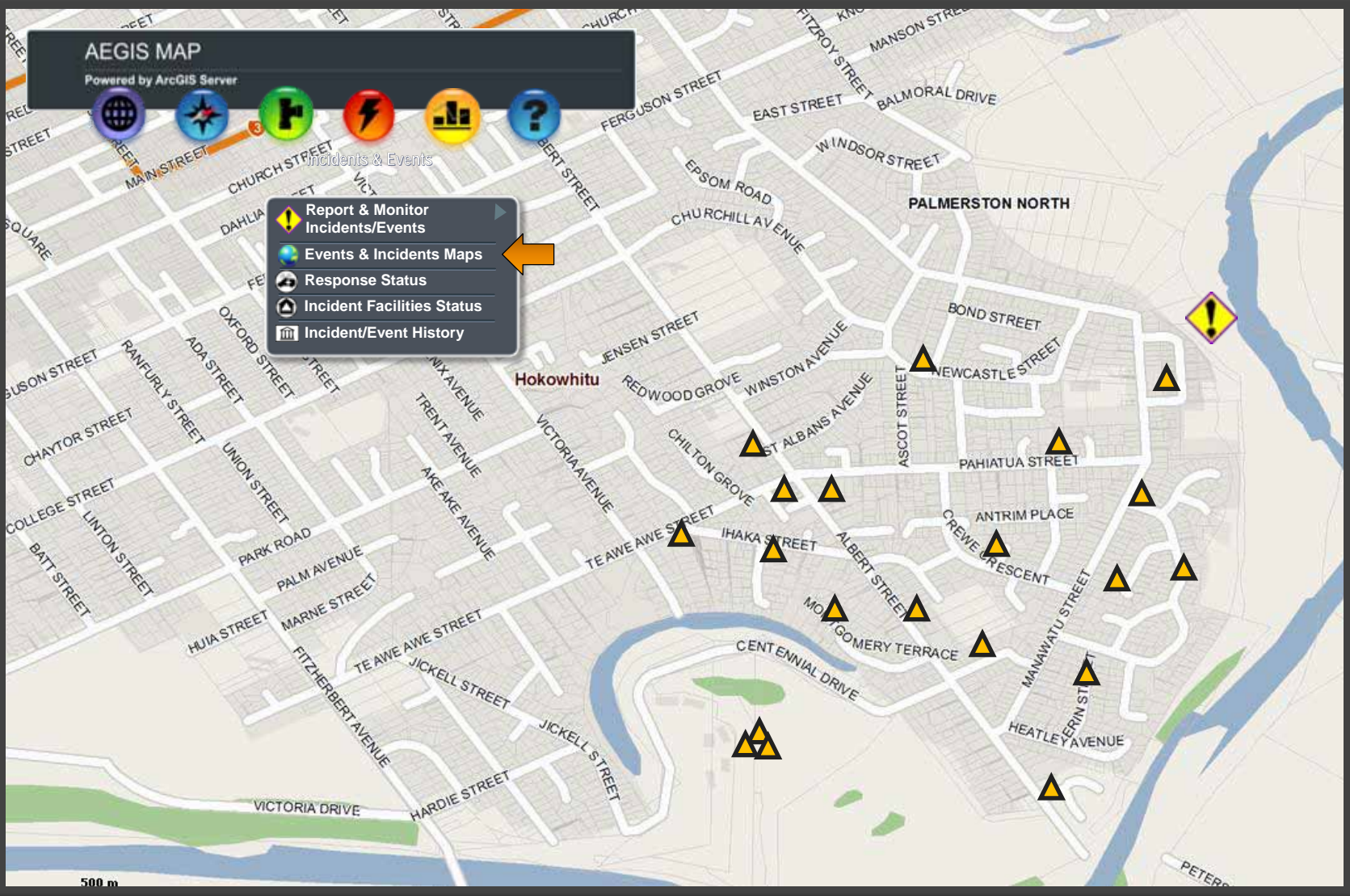
# AEGIS MAP

Powered by ArcGIS Server

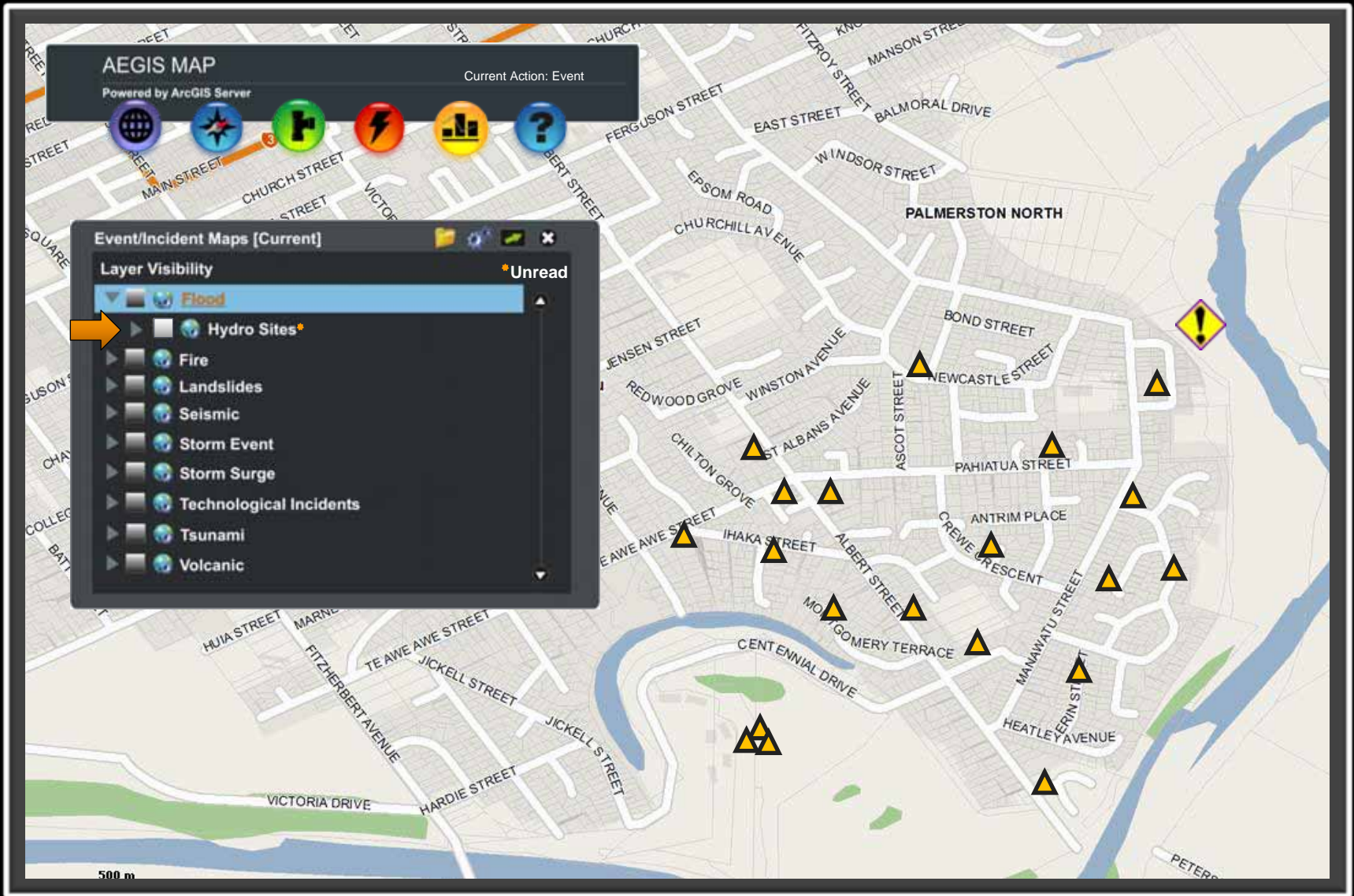


Incidents & Events

- Report & Monitor Incidents/Events
- Events & Incidents Maps
- Response Status
- Incident Facilities Status
- Incident/Event History



# Flood Scenario: Show current river levels



AEGIS MAP

Powered by ArcGIS Server

Current Action: Event

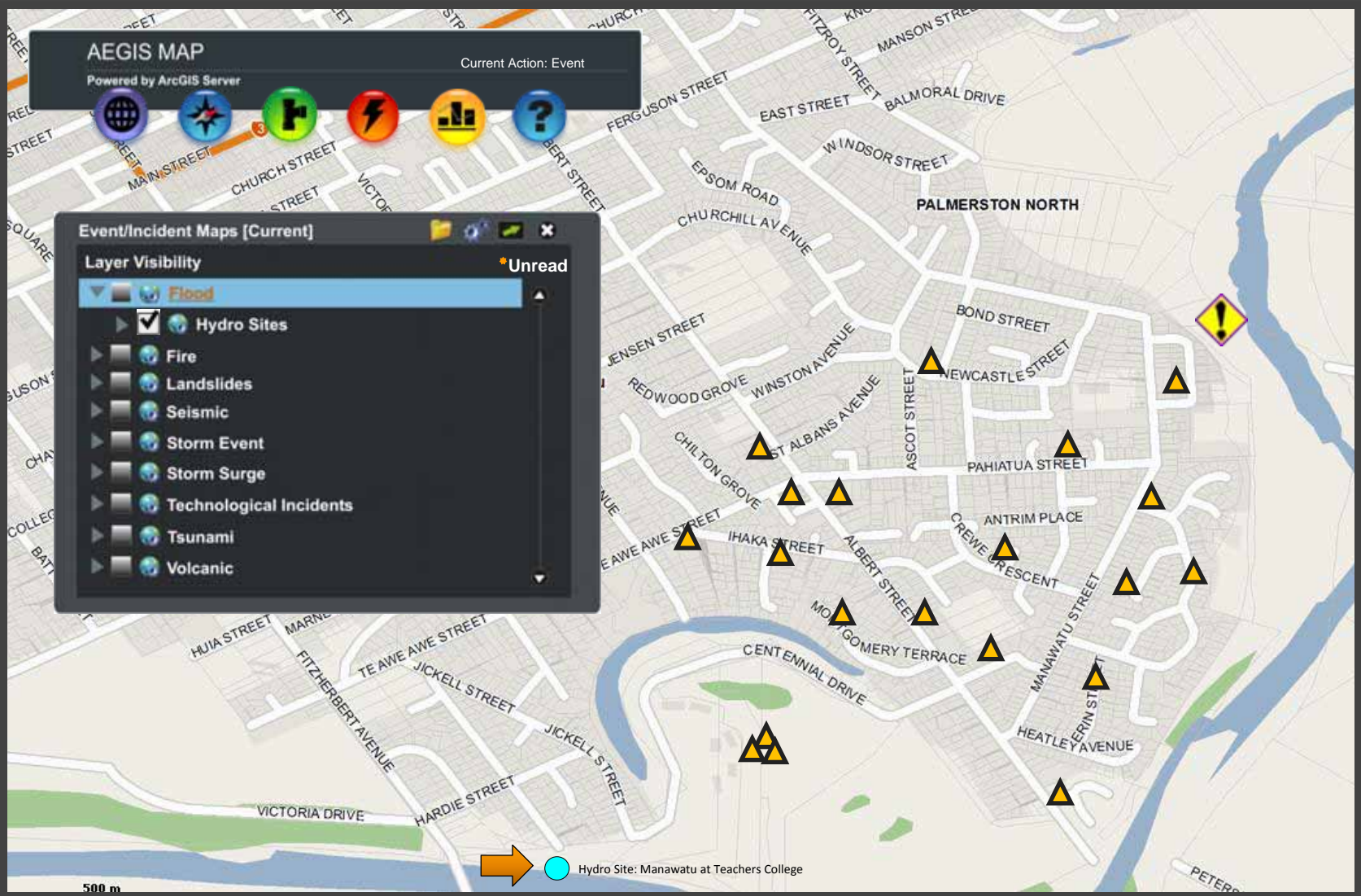


Event/Incident Maps [Current]

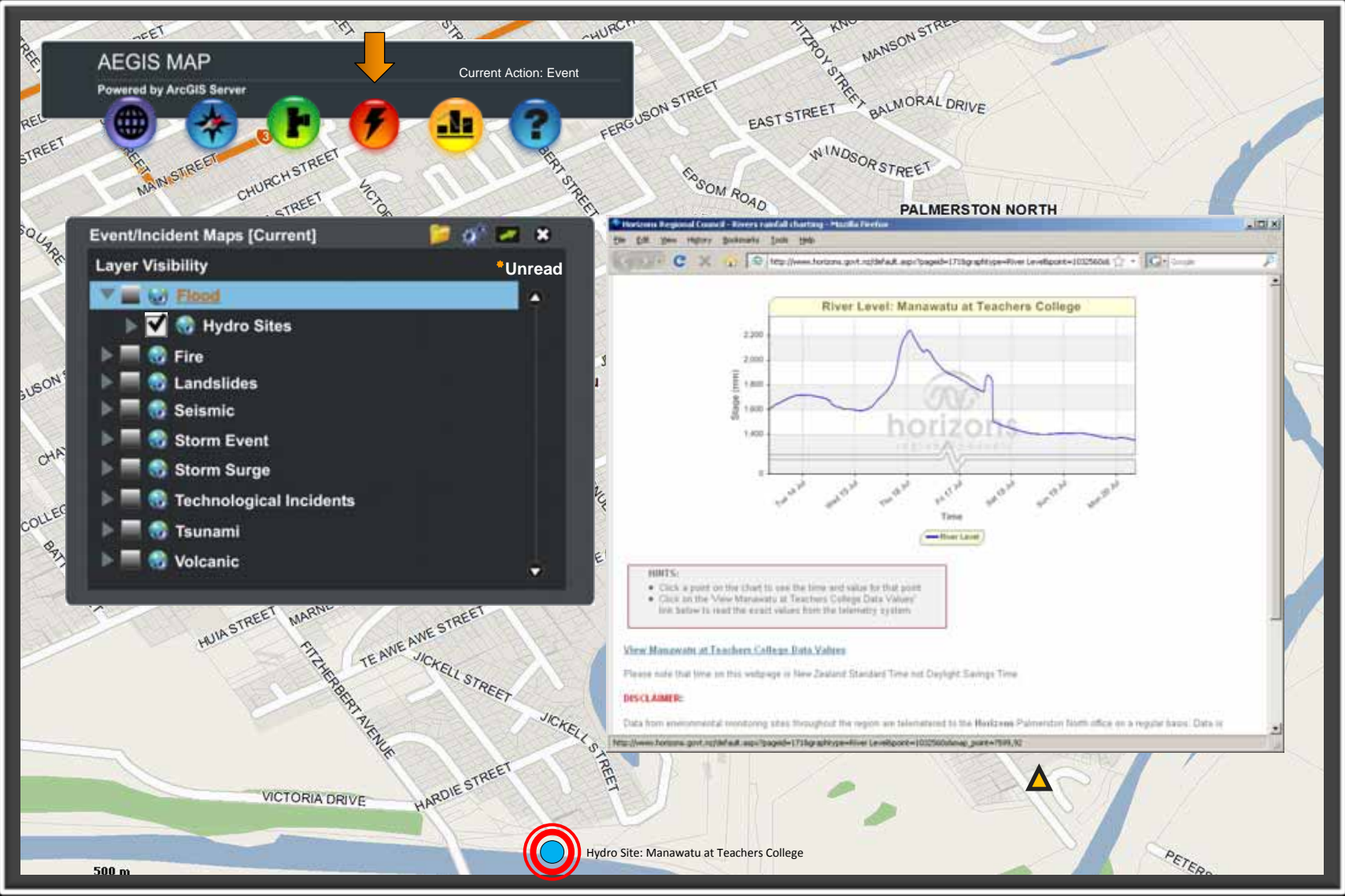
Layer Visibility

Unread

- Flood
- Hydro Sites
- Fire
- Landslides
- Seismic
- Storm Event
- Storm Surge
- Technological Incidents
- Tsunami
- Volcanic



→ Hydro Site: Manawatu at Teachers College





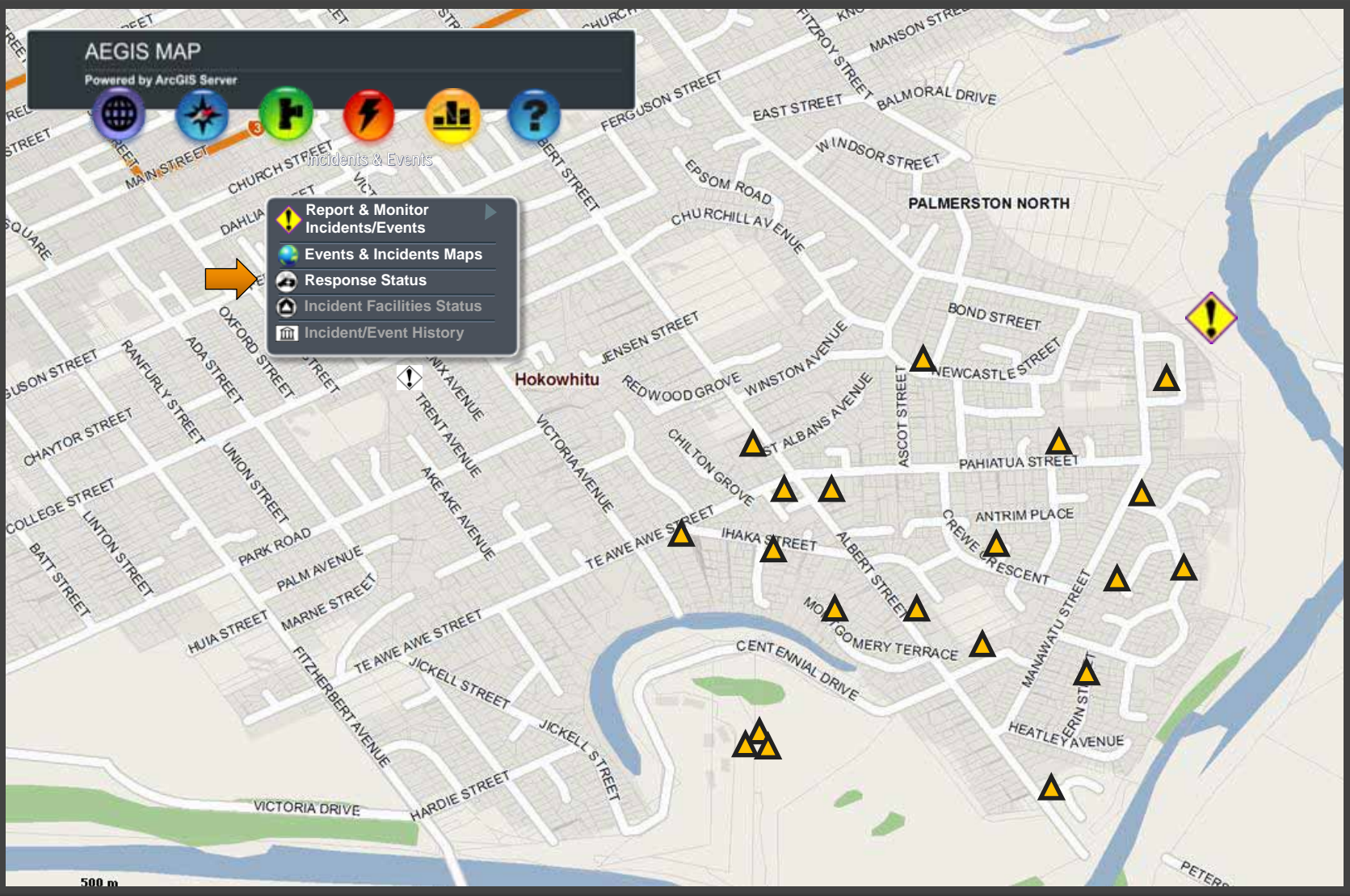
# AEGIS MAP

Powered by ArcGIS Server



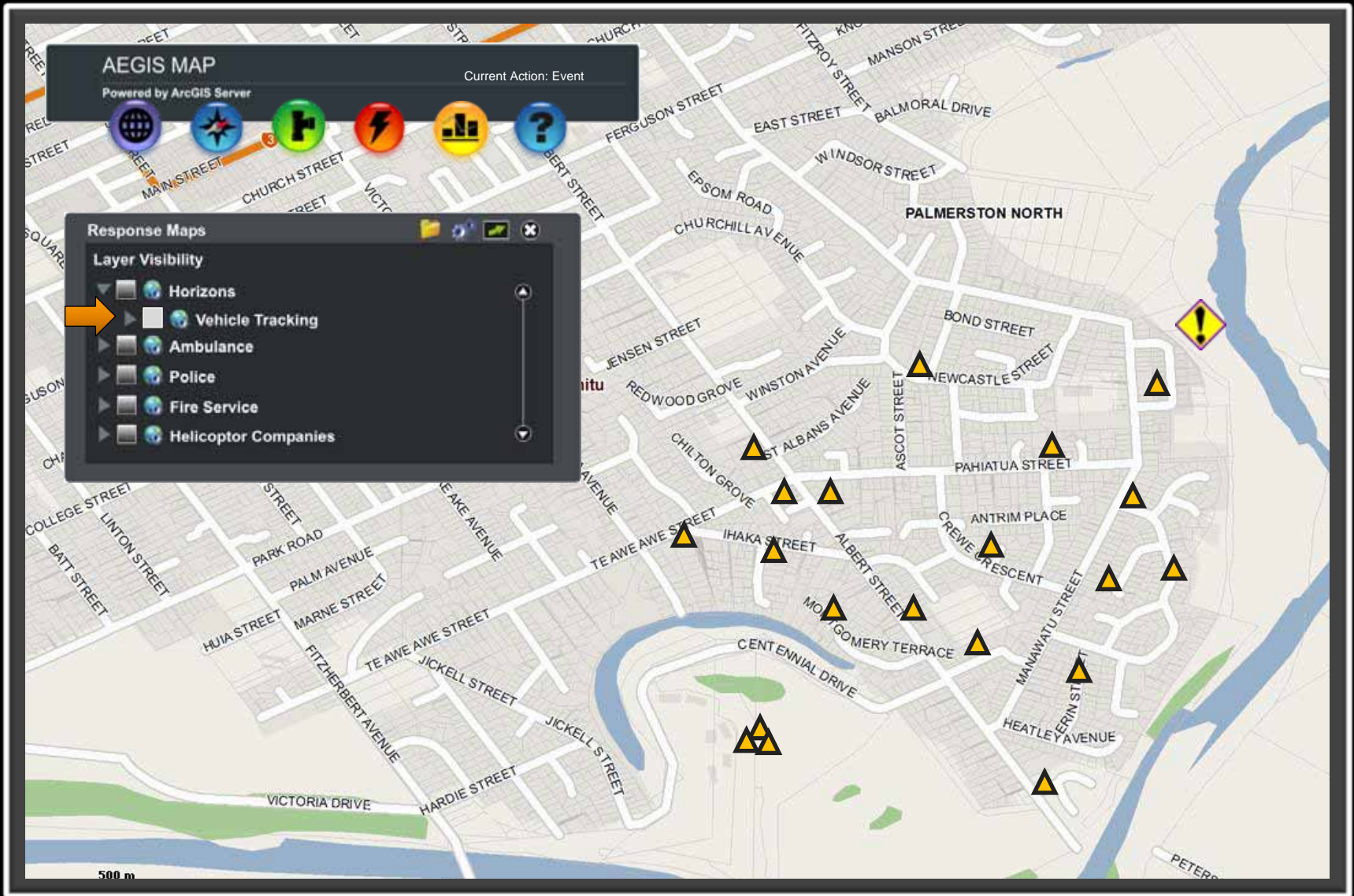
Incidents & Events

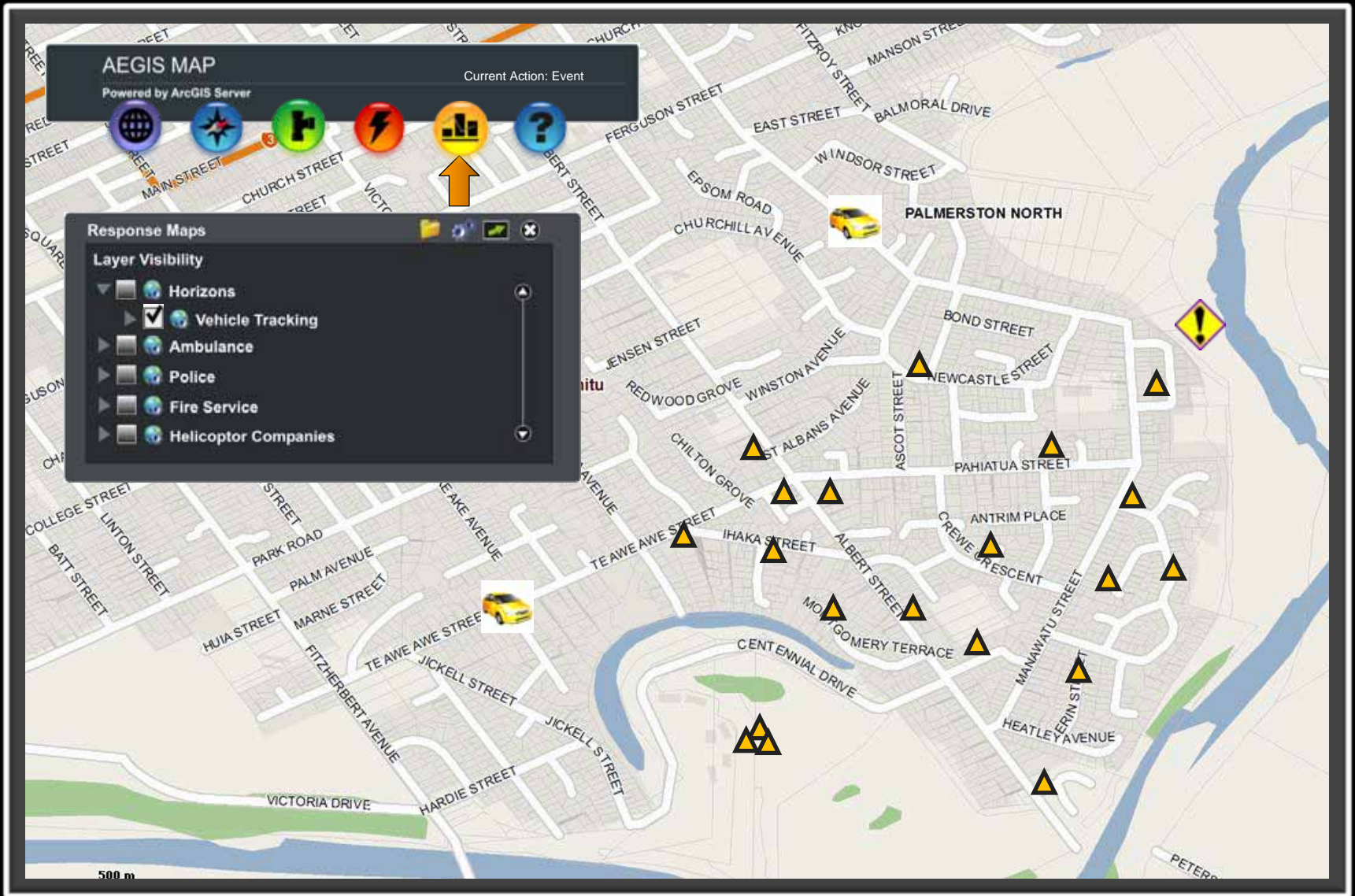
-  Report & Monitor Incidents/Events
-  Events & Incidents Maps
-  Response Status
-  Incident Facilities Status
-  Incident/Event History



500 m

# Flood Scenario: Locate staff





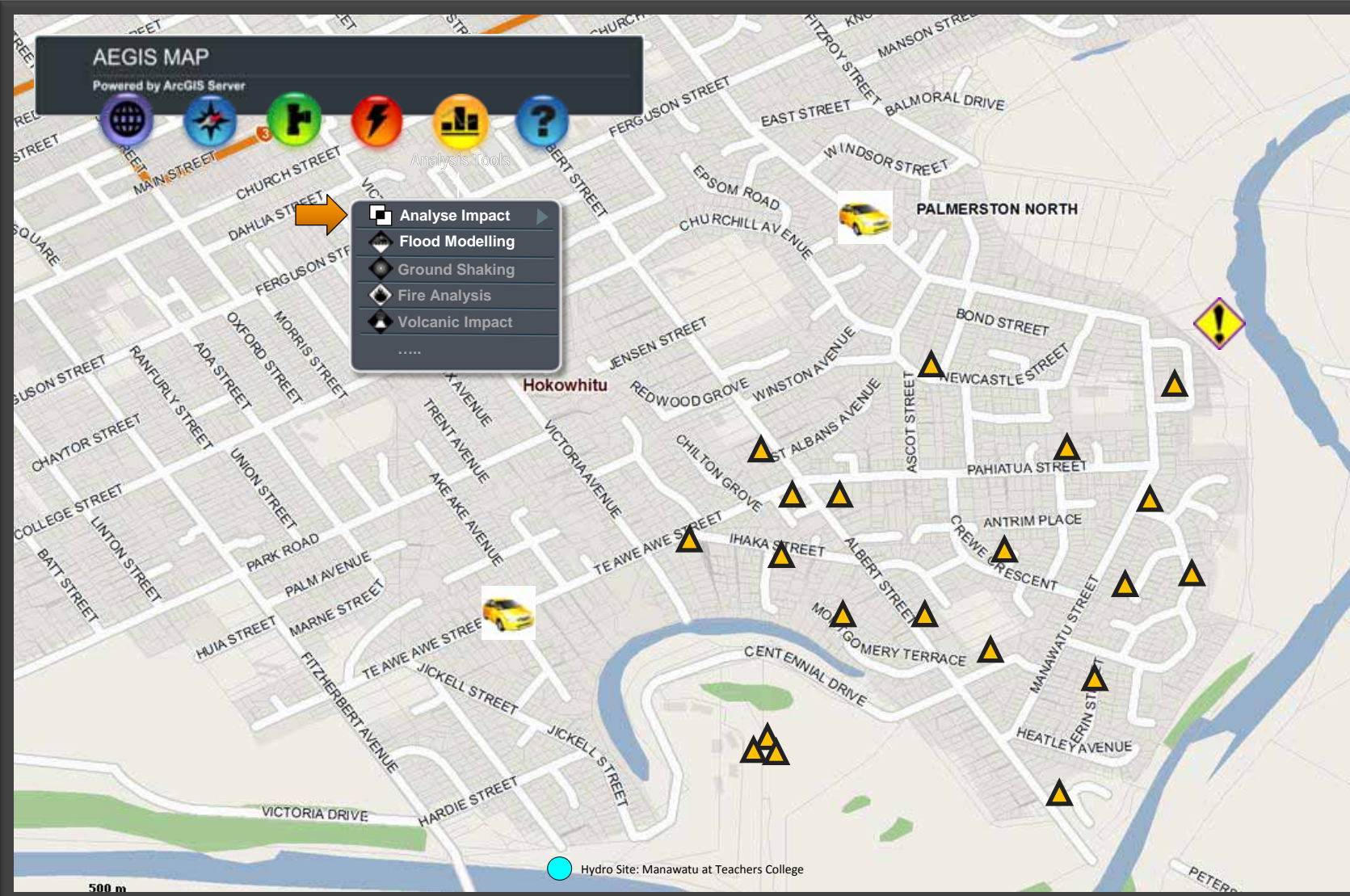
# AEGIS MAP

Powered by ArcGIS Server



Analysis Tools

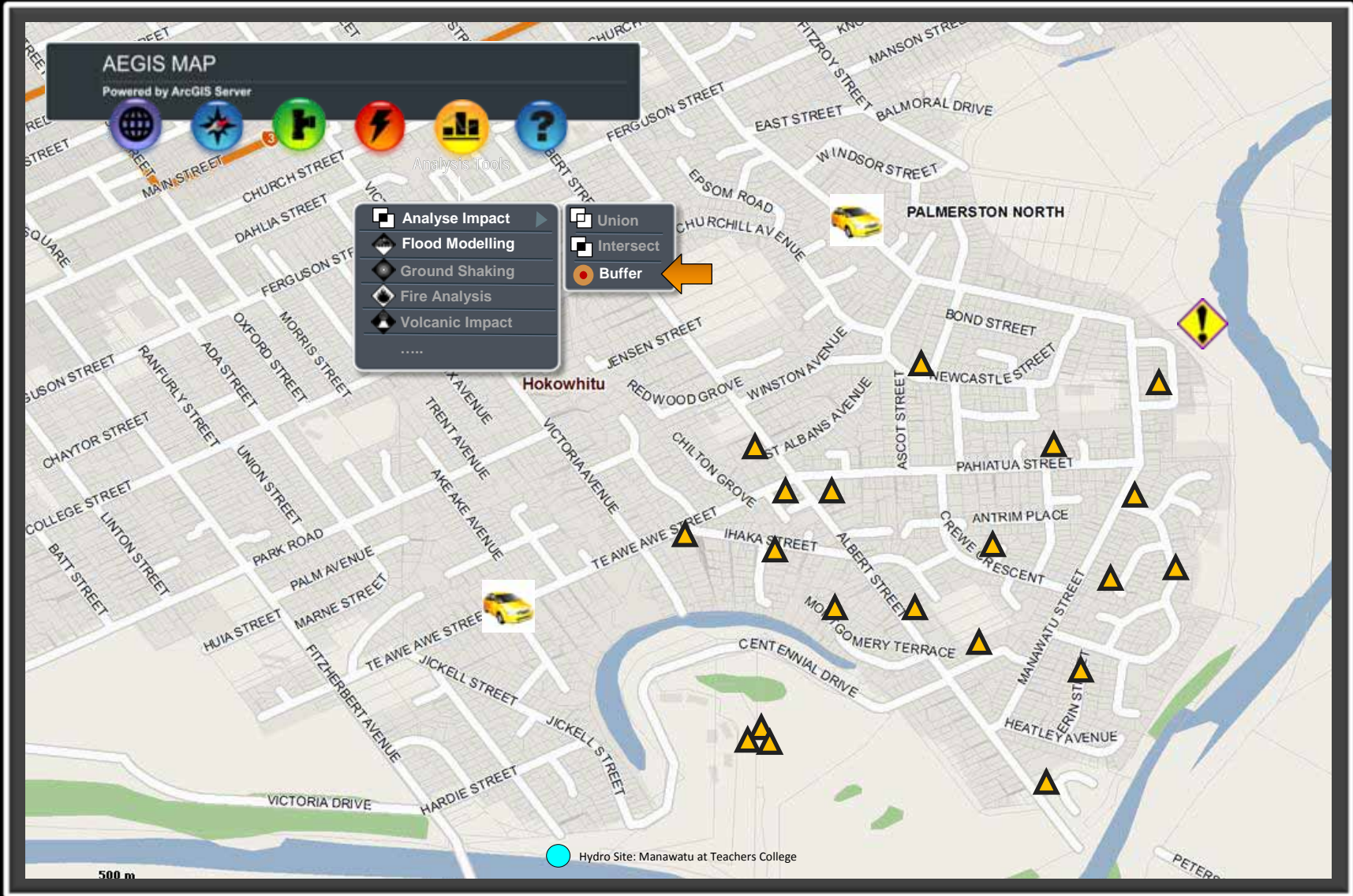
- Analyse Impact
- Flood Modelling
- Ground Shaking
- Fire Analysis
- Volcanic Impact
- .....



500 m

Hydro Site: Manawatu at Teachers College

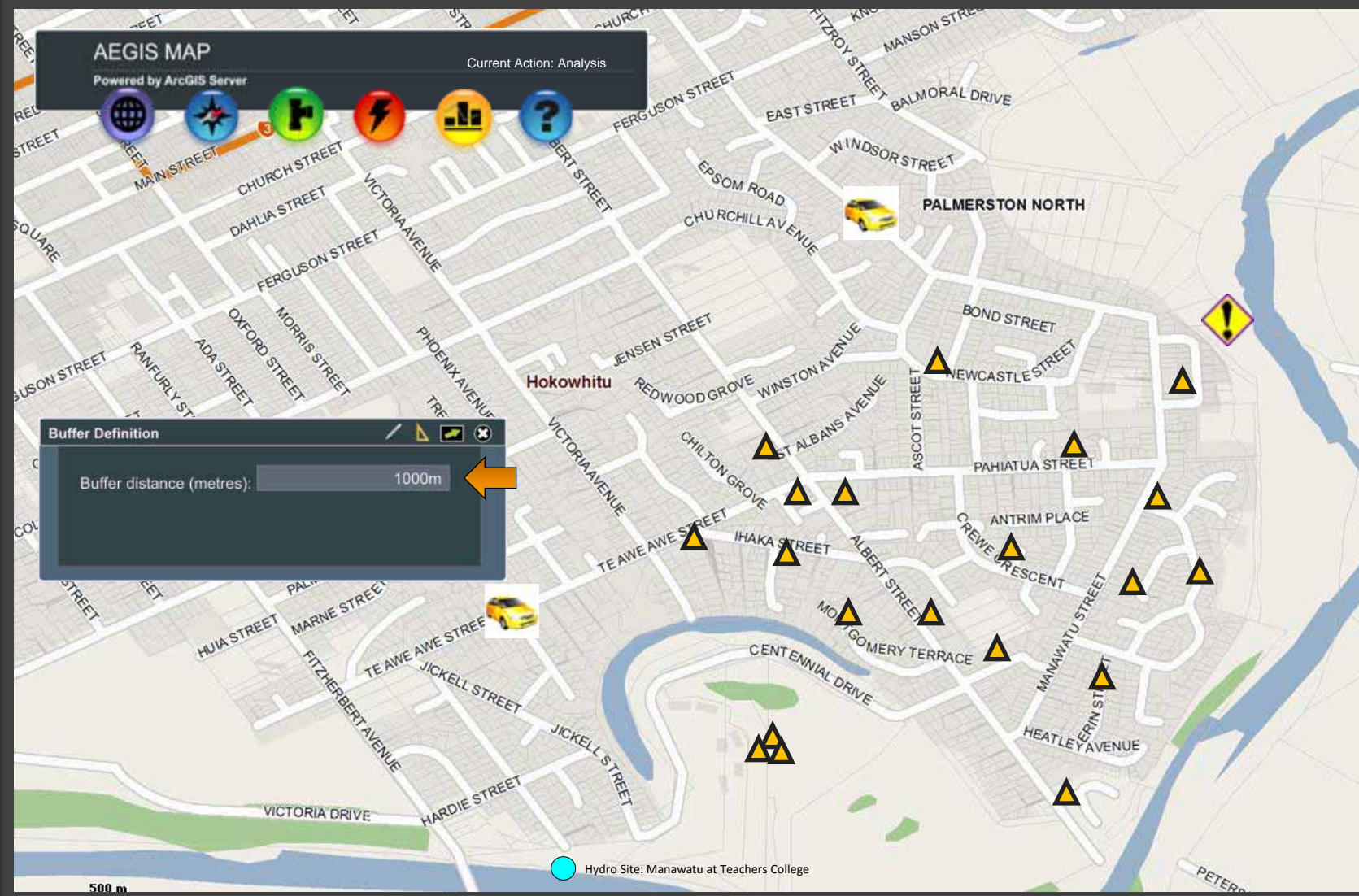
# Flood Scenario: Identify impact zone



AEGIS MAP

Powered by ArcGIS Server

Current Action: Analysis



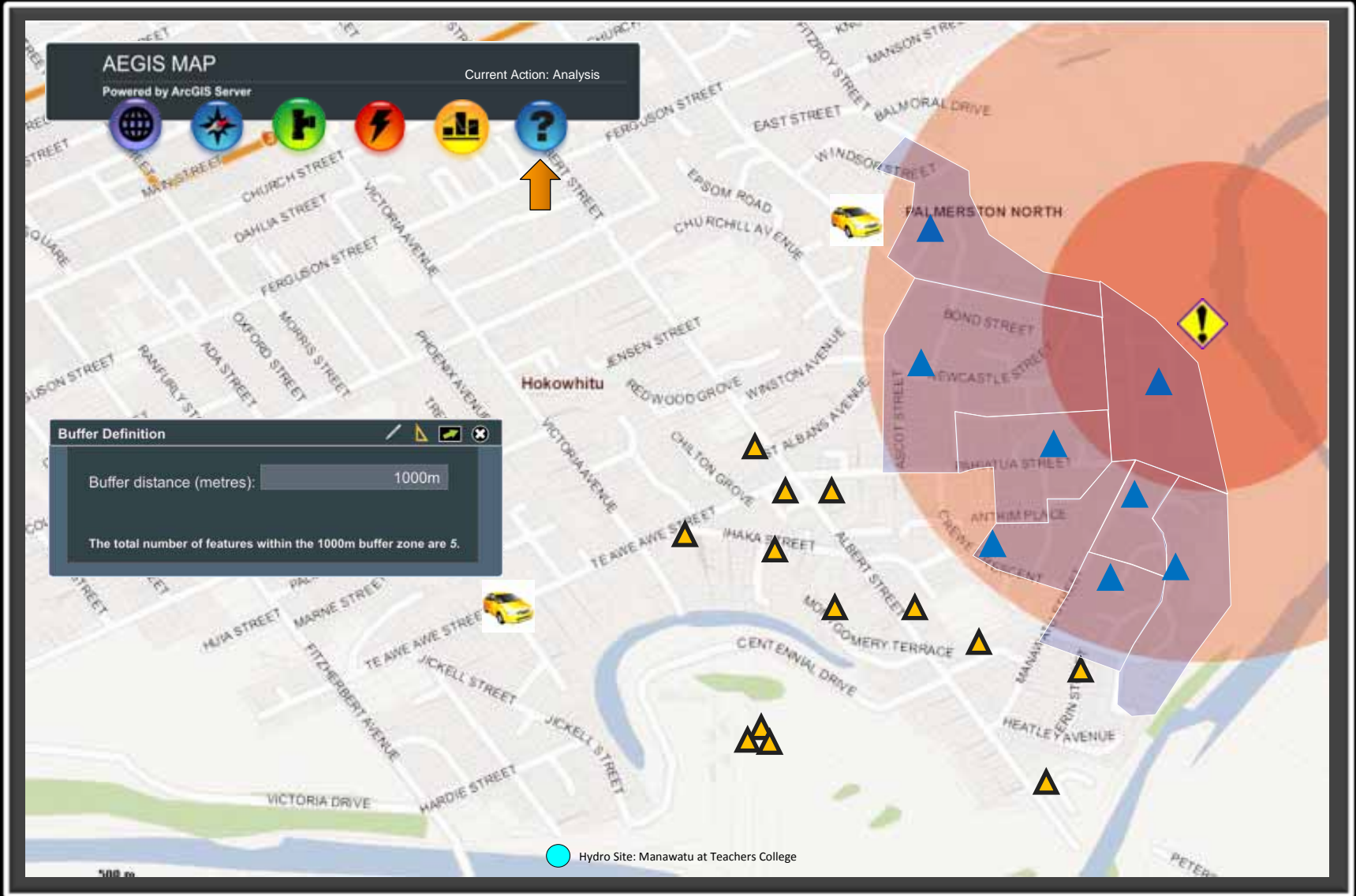
Buffer Definition

Buffer distance (metres):

Hydro Site: Manawatu at Teachers College

500 m

# Flood Scenario: Electricity consumers affected



**AEGIS MAP**

**AGENCY: Logged Out**

**THE END**

For more information: [adrienne.bonnington@horizons.govt.nz](mailto:adrienne.bonnington@horizons.govt.nz)

