



Te Rākau
Whakamarumarū

Ministry of Civil Defence
& Emergency Management

Sector Coordinating Entity

What's an SCE?

Mark Constable

Emergency Management Advisor,
Sector Development



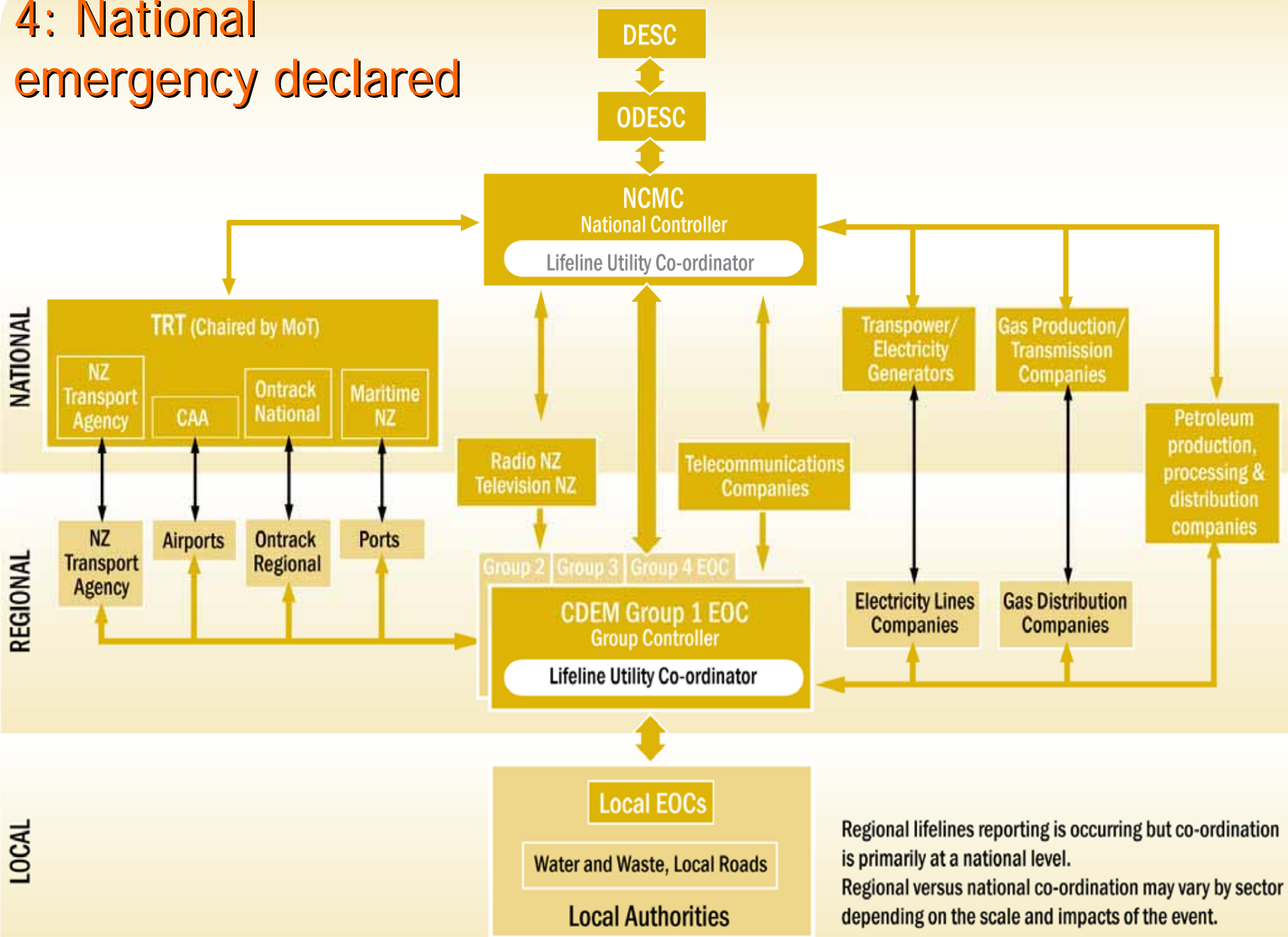
Sector Coordinating Entities

- Principally an operational entity
- National emergencies
- Single “point of contact” per sector
- Streamline communication & reporting
- Facilitate sector-specific solutions
- Streamline cross-sector ‘coordination’
- Coordinate sector requests for assistance

Current SCE

- Electricity: Transpower
- Gas: GANZ
- Telecommunication: TEPF (NEAT)
- Transport: TRT

4: National emergency declared



Regional lifelines reporting is occurring but co-ordination is primarily at a national level.
 Regional versus national co-ordination may vary by sector depending on the scale and impacts of the event.

Briefing for Simulation Exercise

Exercise Focus

- What will NZ's national lifeline utilities be doing in response to the threat?

Tasking

- Address the six questions on the handout sheet
- Spokesperson to report back to the National Controller in the NCMC at 1630

Briefing for Simulation Exercise

Process Aspects

- Venues and allocations
- Hosts, Co-ordinators, Players and Observers
- Cross-communication between SCEs encouraged
- Spokesperson to report back to the National Controller in the NCMC at 1630
- People from MoT and Transpower offices are to be at the Bowen House, Lambton Quay entrance to the Beehive by 1625