



**Te Rākau  
Whakamarumarū**

**Ministry of Civil Defence  
& Emergency Management**

# **National Tsunami Advisory & Warning Plan**

[www.civildefence.govt.nz](http://www.civildefence.govt.nz)

# Development Process

- 1'st Draft: '07
- Consulted with Sector- concluded Jan 08
- Re-draft:
  - Main document: Responsibilities; Process; Types of Notifications
  - Annexes: Action guidelines, Message templates, Risk assessment, (Signage/Evac Zones under devpmt)
- Published on website, to be included as contingency plan in revised Guide

# Part 1: Responsibilities

- MCDEM
- PTWC; Airways Corporation & MetService
- GNS Science
- LINZ
- CDEM Groups
- Media
- Maritime NZ
- Other agencies

# Responsibilities: MCDEM

- Initiate & issue of National Warnings & Advisories via the NWS
- Represents NZ on Pacific Tsunami Warning System
- MoU with GNS Science

# Responsibilities: PTWC

- Operational Headquarters of PTWS
- Monitors sea level & seismic network in Pacific
- Issues Tsunami Information, Advisory, Watch, Warning to MCDEM & GNS Science (*messages **do not** constitute official warnings in NZ*)

# Responsibilities: Airways Corp & MetService

- Receive PTWC messages via AFTN, GTS as redundancy for MCDEM
- Forward PTWC messages to MCDEM and
- Call MCDEM to confirm receipt

# Responsibilities: GNS Science

- Maintains & monitors national geological monitoring & data collection system
- Maintains & monitors NZ's sea level monitoring network
- Sends eq reports to MCDEM
- Serves as MCDEM's primary advisor
- When required, activate a panel of tsunami experts

# Responsibilities: LINZ

- Manages installation & operation of NZ's sea level monitoring network
- Maintains partnership with GNS Science to build & maintain network



# Responsibilities: CDEM Groups

- Plan for & maintain public alert systems
- Receive National Advisories & Warnings from MCDEM
- Conduct further local threat assessment, and
- Decide appropriate public alerting

# Responsibilities: Media

- National media: Broadcast National Advisories & Warnings when requested by MCDEM (under MoU)
- Local media: May be used by CDEM Groups as part of public alerting systems (by agreement at local level)

# Responsibilities: Maritime NZ

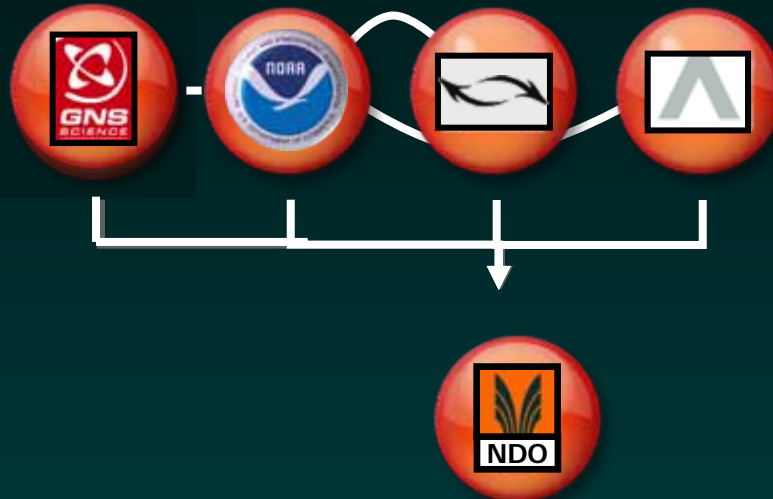
- Receive National Advisories & warnings from MCDEM
- Broadcasts tsunami information to mariners

# Responsibilities: Other Agencies

- Receive National Advisories & warnings from MCDEM
- Respond in accordance with own arrangements and in support of CDEM Groups

# Part 2: Process for Tsunami Notifications (National)

# Notification

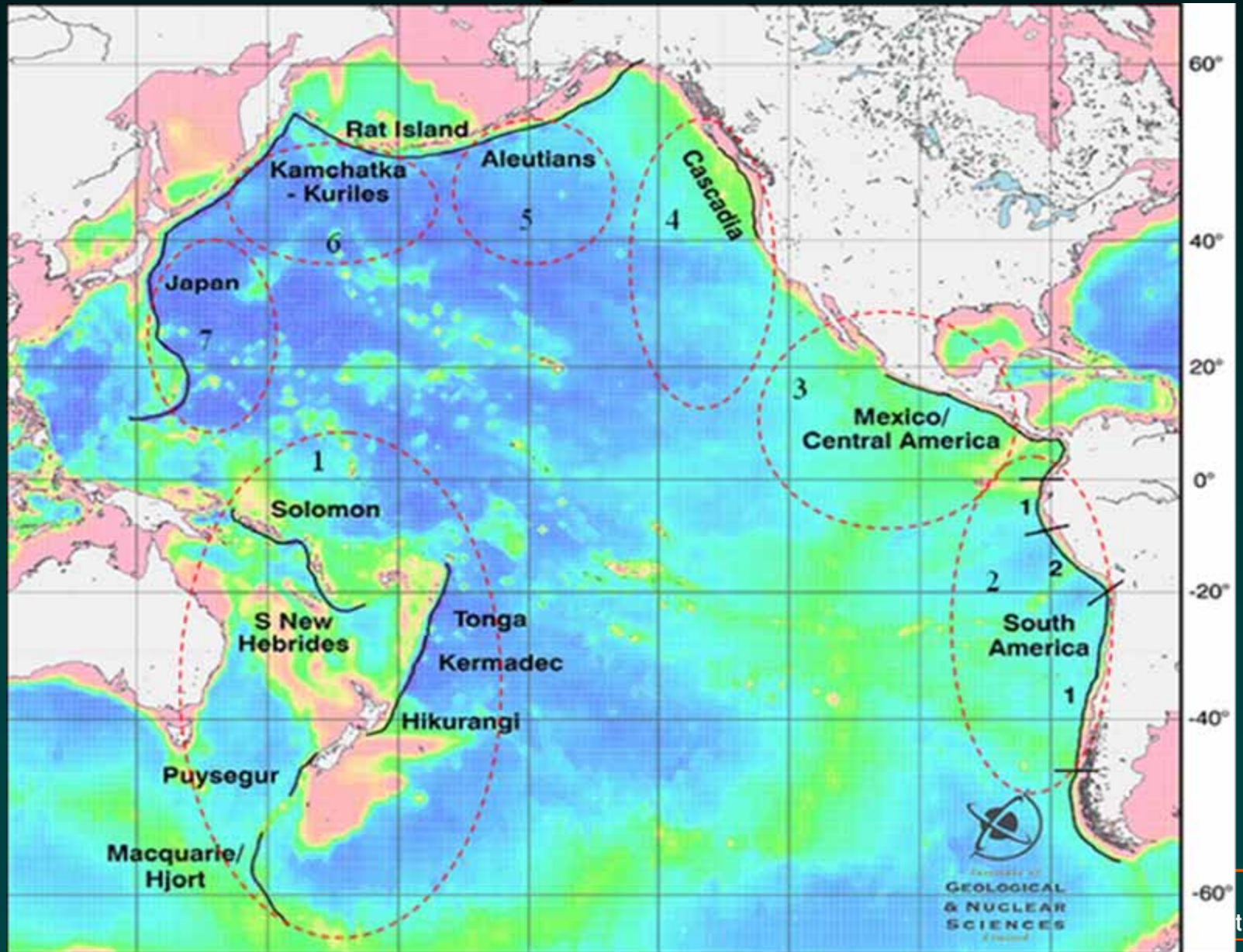


# Assessment

Region	Location	Thresholds	Template to use
1	South West Pacific (includes NZ local source)	Mw ≥9 and Depth <50km	National Warning – Tsunami: Threat to NZ
		or PTWC Warning for NZ	National Advisory - Tsunami: Potential threat to NZ
2	South America	Mw ≥7 - ≤8.9 and Depth <50km or PTWC Watch for NZ	National Advisory - Tsunami: Potential threat to NZ
3	Central America	PTWC Watch or Warning for NZ	National Advisory - Tsunami: Potential threat to NZ
4	Cascadia		
5	Aelutians Rat Island		
6	Kurile Islands Kamchatka		
7	Japan		
8	Other (any location not inside a circle on map)		



# Regions



# Thresholds

Region*	Location	Parameters	Template to use
1	South West Pacific (includes NZ local source)	Mw $\geq$ 9 and Depth <50km <b>or</b> PTWC Warning for NZ	National Warning – Tsunami: Threat to NZ
		Mw $\geq$ 7 - $\leq$ 8.9 and Depth <50km <b>or</b> PTWC Watch for NZ	National Advisory - Tsunami: Potential threat to NZ
2	South America	Mw $\geq$ 8.0 and Depth <100m <b>or</b> PTWC Watch or Warning for NZ	National Advisory - Tsunami: Potential threat to NZ
3	Central America	PTWC Watch or Warning for NZ	National Advisory - Tsunami: Potential threat to NZ
4	Cascadia		
5	Aelutians Rat Island		
6	Kurile Islands Kamchatka		
7	Japan		
8	Other (any location not inside a circle on the Pacific map)		



# Part 3: Types of Notifications (National)

# Templates for:

- National Advisory: No Threat to NZ
- National Advisory: Potential Threat to NZ
- National Warning: Threat to NZ
- National Advisory Cancellation message.
- National Warning Cancellation message
- Media messages for all the above

# Annexes

**A:** Action Guides

**B:** Templates

**C:** Tsunami Categories & Threat

**D:** Signage standard (summary) &  
Evacuation Zones (guidelines)-  
under development

# Additional Information NWS



Te Rākau  
Whakamarumaru

Ministry of Civil Defence  
& Emergency Management

## NWS Recipient Criteria.

Output	Performance standard
Staff availability	A minimum of one person on duty all hours (24 hours, 7 days a week)
Capability to receive warnings	All hours.
Maintenance of communication systems	Landline telephone, cell phone, fax and/or email accessible to duty person at all hours.

## Provision of single points of contact

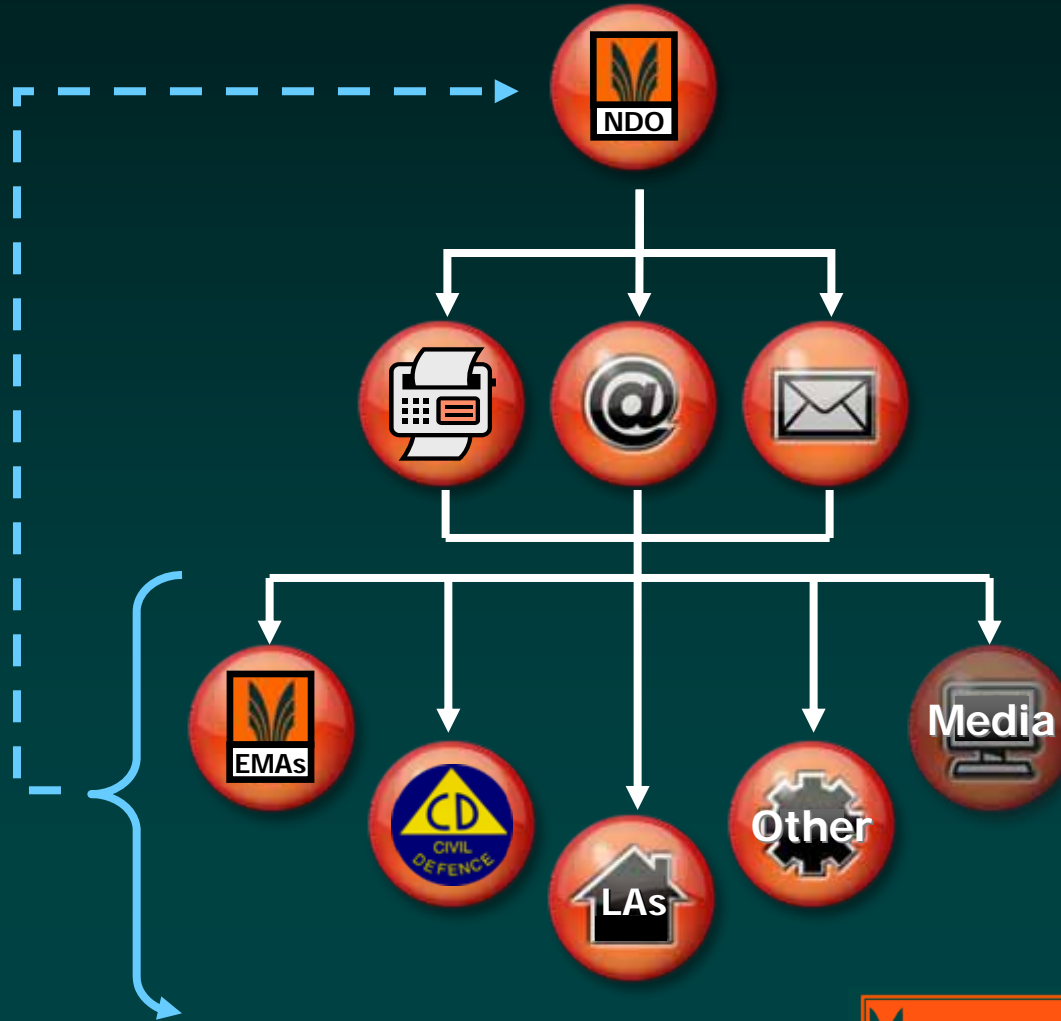
A recipient agency must register single point of contact addresses and contact numbers for delivery of warnings. Single point of contact addresses and contact numbers should connect directly to the Duty Person for the agency registered. Once agencies have received warnings through the single point of contact, it is that agencies responsibility to disseminate message internally. Agencies must provide the following contact details:

- a single or group email address
- a duty telephone number
- a duty fax number
- a duty cellular number for sms text message

Recipient agencies are to ensure addresses are current and correct and are to manage recipients under group address.

Acknowledge receipt of warnings (see Table 19.1)	Within 30 minutes (all hours) by a person who has the executive authority to act on the warning.. (Acknowledgement instructions will be contained in the warning)
Responding to warnings	Procedures are in place to facilitate an effective response to warnings.
Participation in national warning message tests	Participate in all tests (4 per year).

# National Warning System





National Warning System

Local Response

